

---

**TRENDY V MEZINÁRODNÍCH  
PRACOVNÍCH MIGRACÍCH V ČESKÉ  
REPUBLICCE**  
**INTERNATIONAL LABOUR MIGRATION  
TRENDS IN THE CZECH REPUBLIC**

---

**MILADA HORÁKOVÁ**

**VÚPSV/RILSA  
PRAHA/PRAQUE**



**CONFERENCE MIGRATION AND DEVELOPMENT OSTRAVA  
4th – 5th September 2007**

---

## MEZINÁRODNÍ MIGRACE V ČESKÉ REPUBLICE INTERNATIONAL MIGRATION IN THE CR

- The Czech Republic exhibits long-term positive net migration and this trend is expected to continue into the future. Positive net migration may compensate for unfavourable demographic development for a limited period and prevent a population decrease
  - The Czech population may be stabilized to a certain degree only with the synergy of high fertility rate, low mortality and high positive net migration.
  - Throughout the entire history of the former Czechoslovakia, migration occurred from Slovakia to the now Czech Republic. This trend continues and it is expected that in the future migration between Slovakia and the Czech Republic will be significant considering economic reasons, the cultural/linguistic similarities and the strong social/family ties of the population of the two countries.
  - The migration of Slovak Roma has occurred with varying intensity since the end of WWII. This is expected to continue into the future due to different living conditions in both countries and strong family ties between Czech and Slovak Roma.
  - Since 1993-2006 external migration net was +182 thousand.
  - Migration development has been affected primarily by legal regulations with respect to the entry and subsequent stay of foreigners from third countries. The Czech Republic is more open to such migration than other EU member states. Therefore, it is expected that such migration will continue and even increase in the future.
-

---

## CIZINCI S POVOLENÍM K POBYTU FOREIGNERS HOLDING RESIDENCE PERMITS

- Migration into the CR is primarily economically motivated but immigration for the purpose of settlement increases.
  - At the end of 2006 there were 322 thousand foreign holders of residence permits in the Czech Republic, making up 3,1 % of the total population. Foreigners with long-term residence made up 1,8%, those with permanent residence 1,3%.
  - Temporary migration of foreigners is often followed by permanent settlement, sometimes resulting in their naturalisation. In the period 1999-2006 Czech citizenship was granted to almost 33 thousand foreigners, mainly Slovaks (86% in 1999, 84% in 2000, 75% in 2001, 65% in 2002,). Their share is gradually falling and that of naturalised foreigners from other countries is on the increase.
  - The reasons for foreigners settling in the Czech Republic (legal stay of more than one year) are: economic activities 56%, family unification 32% and settlement 13% (end of 2005).
  - Three quarters of foreigners with residence permits in the Czech Republic (both temporary and permanent) may be considered settled since the length of stay exceeds one year. This number is increasing, 164 thousand in 2001 and 294 thousand in 2006.
-

---

## PRIORITY POLITIKY ZAMĚSTANNOSTI EMPLOYMENT POLICY PRIORITIES

- The main priorities are full employment so as to ensure high economic growth and the stability of the social security and pension system.
  - The Government aims to:
    - Increase the quality of work places and productivity;
    - Support the incorporation of handicapped groups into the labour market;
    - Increase employment and decrease long-term unemployment and the number of economically non-active people over 15 years;
    - Aid the development of individual enterprises and the creation of work places/placements;
    - Support flexibility in the labour market (employers and employees);
    - Support professional and geographical mobility;
    - Strengthen/empower equal opportunities for men and women;
    - Develop an employment policy focused on prevention and work force activation;
    - Achieve the compliance of wage development and productivity;
    - Coordinate the taxation system with that of social benefits;
    - Modernise the professional vocational education and training system;
    - Encourage the improvement of qualifications and skills and create an efficient system for the continued/additional professional education of the most vulnerable group in the workforce – unemployed persons below the age of 25 years (one quarter of the unemployed);
    - Make accessibility to social benefits more difficult as well as to better utilise instruments of pro-active employment policy, including public works;
    - Support the employment of women with young children and increase the involvement of older people;
    - Reconsider a further increase in the retirement age;
    - Empower/Strengthen public employment services;
-

---

## ZAMĚSTNANOST CIZINCŮ EMPLOYMENT OF FOREIGNERS

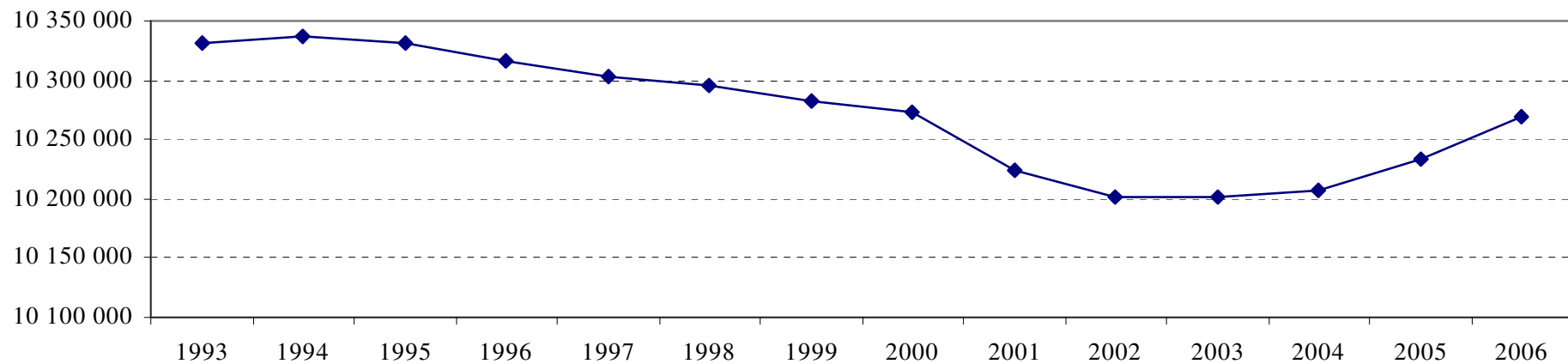
- Economically active foreigners with temporary residence make up 4,6% of the work force and 1.8% of the Czech population (end of 2006).
  - Legislation governing the employment of foreigners does not differentiate between EU and Czech citizens. Foreigners from other countries must have a work permit allowing their employment in the Czech Republic.
  - Foreigners may do business in the Czech Republic pursuant either to the Trade Act or to the Commercial Code. The same rules apply as to Czech citizens, the only difference being that their businesses must be recorded in the Commercial register whereas for Czech entrepreneurs this is obligatory only under certain conditions.
  - Regulation may only be applied to those foreigners holding work permits, other types of work migration are regulation free.
  - Amongst economically active foreigners 24% are trade licence holders; 76% of economically active foreigners are employees (end of 2006)
  - Men make up more than two thirds of those foreigners temporarily employed or doing business in the Czech Republic.
  - The category with the highest share of women is that of foreigners from third countries holding work permits (33% in 2006 respective 50%). EU 30%, trades 29%.
  - The majority of work permit holders are in the 20-49 age group, the highest number being in the 30-39 age group.
  - More than half of all “trade licence” holders are between the ages of 25-39, one third are between the ages of 40-54.
-

---

# VÝVOJ OBYVATELSTVA ČESKÉ REPUBLIKY POPULATION DEVELOPMENT OF THE CZECH REPUBLIC

(střední stavy; mid-year population)

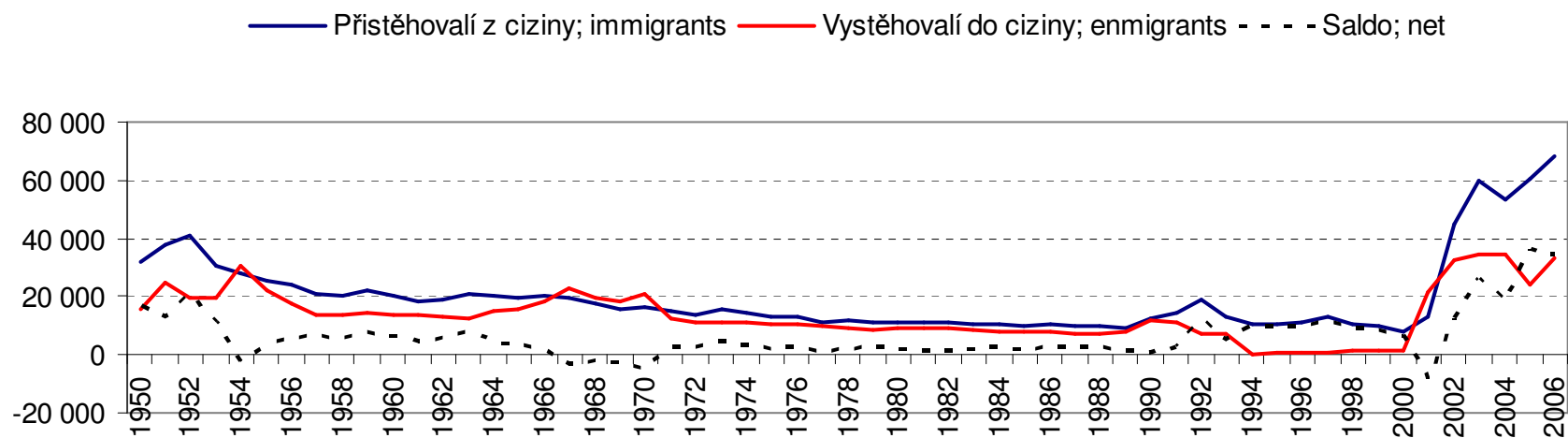
Pramen: ČSÚ; Source: CSO)



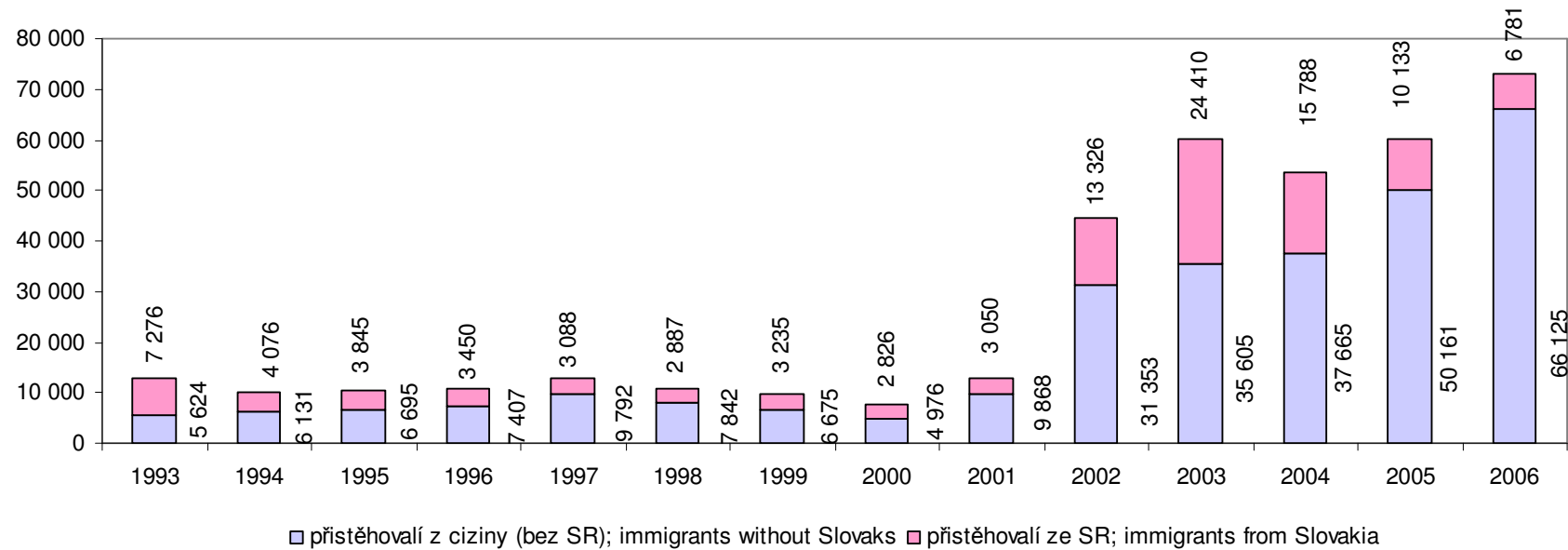
# VÝVOJ EXTERNÍ MIGRACE V ČR V OBDOBÍ 1950-2006

## EXTERNAL MIGRATION DEVELOPMENT IN THE CR 1950-2006

(Pramen: ČSÚ; Source: CSO)



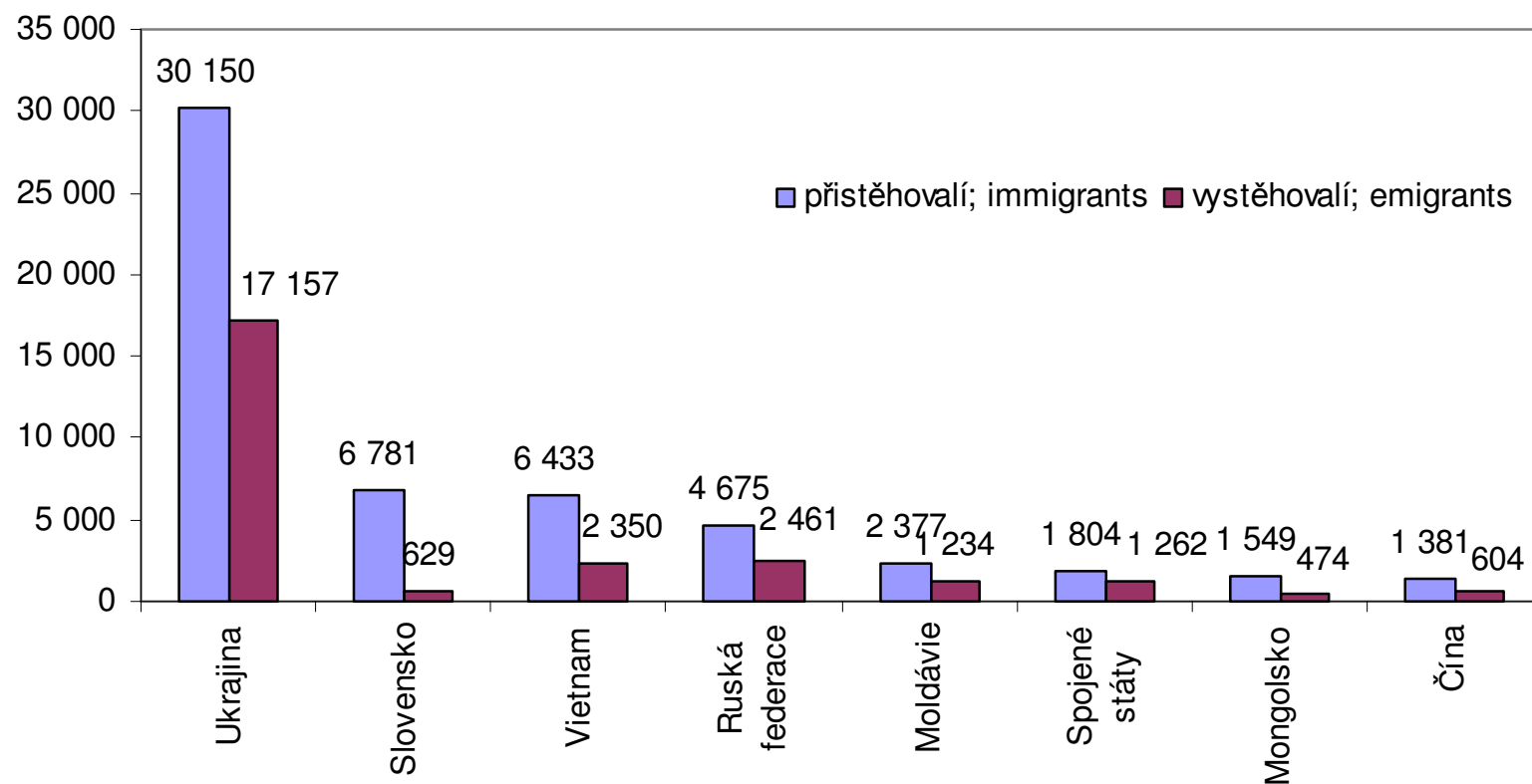
# ZAHRANIČNÍ STĚHOVÁNÍ V ČESKÉ REPUBLICE INTERNATIONAL MIGRATION IN THE CR (Pramen: ČSÚ; Source: CSO)





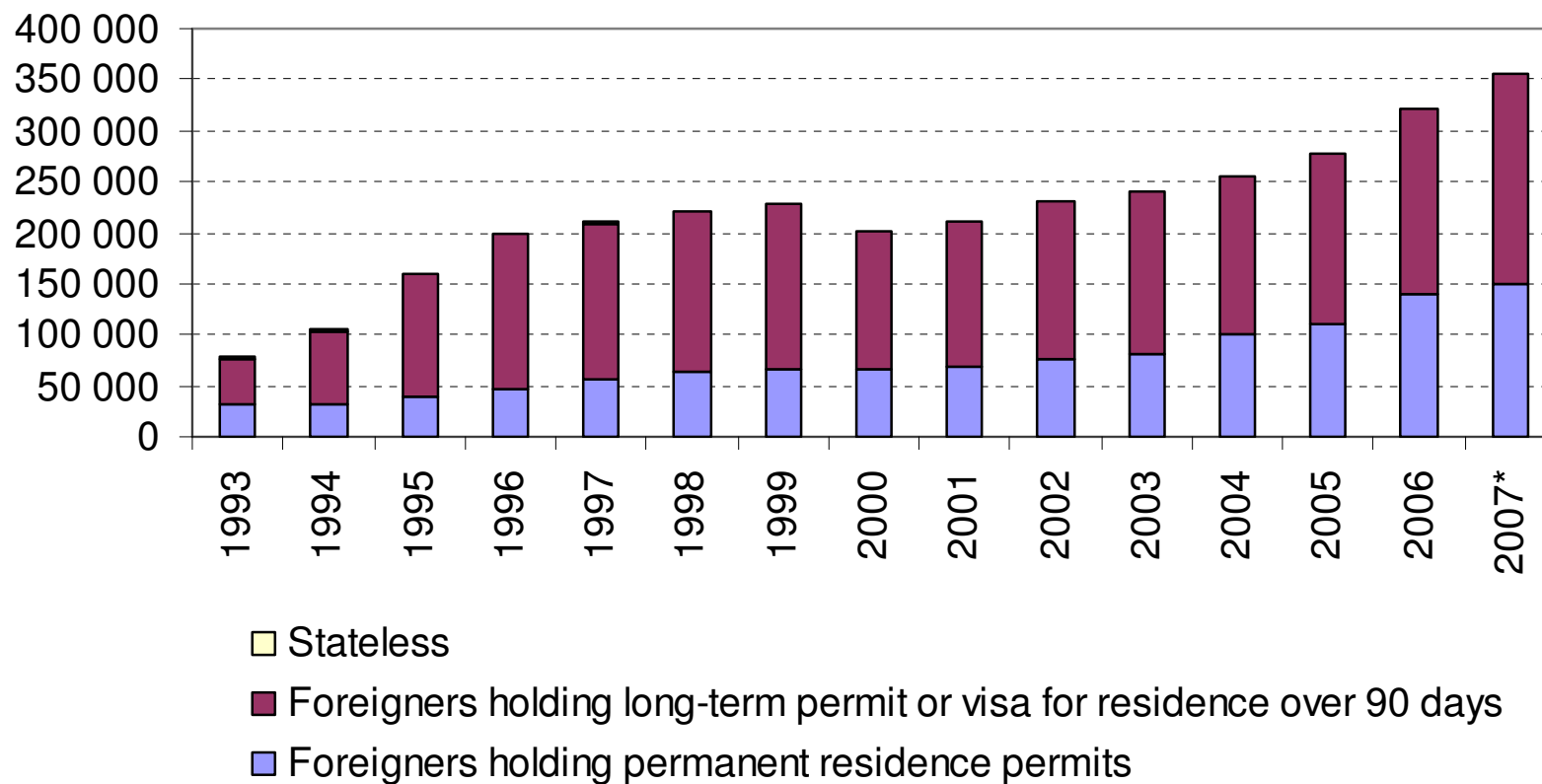
# ZAHRANIČNÍ STĚHOVÁNÍ PODLE OBČANSTVÍ 2006 INTERNATIONAL MIGRATION BY CITIZENSHIP 2006

(Pramen: ČSÚ; Source: CSO)



## CIZINCI S POVOLENÍM K POBYTU V ČESKÉ REPUBLICĚ FOREIGNERS HOLDING RESIDENCE PERMIT IN THE CR

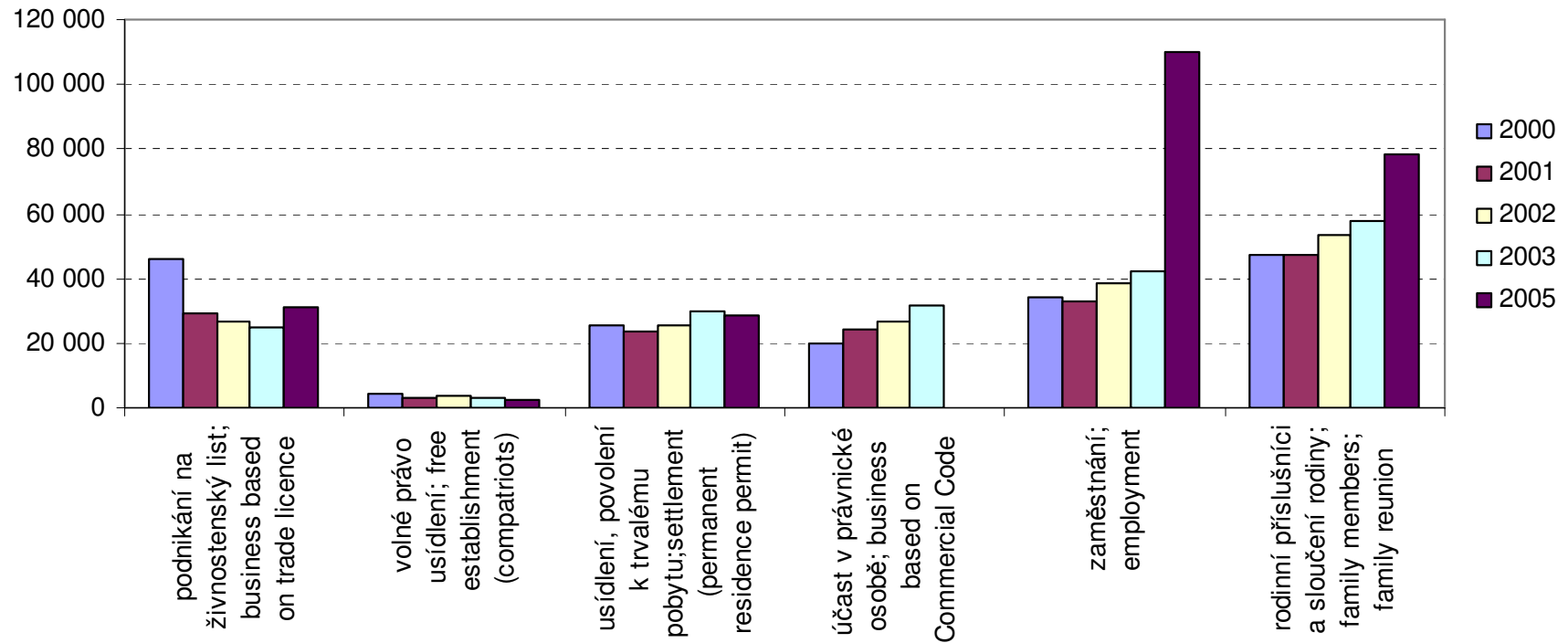
(Source: data from the Alien and Border Police Service of the Czech Republic)



# NEJČASTĚJŠÍ ÚČELY POBYTU CIZINCŮ V ČR 2000-2005

## MOST FREQUENT PURPOSE OF RESIDENCE OF FOREIGNERS IN THE CR 2000-2005

(Source: Foreigners in the Czech Republic, Czech Statistical Office, publication from the years 2001-2006)

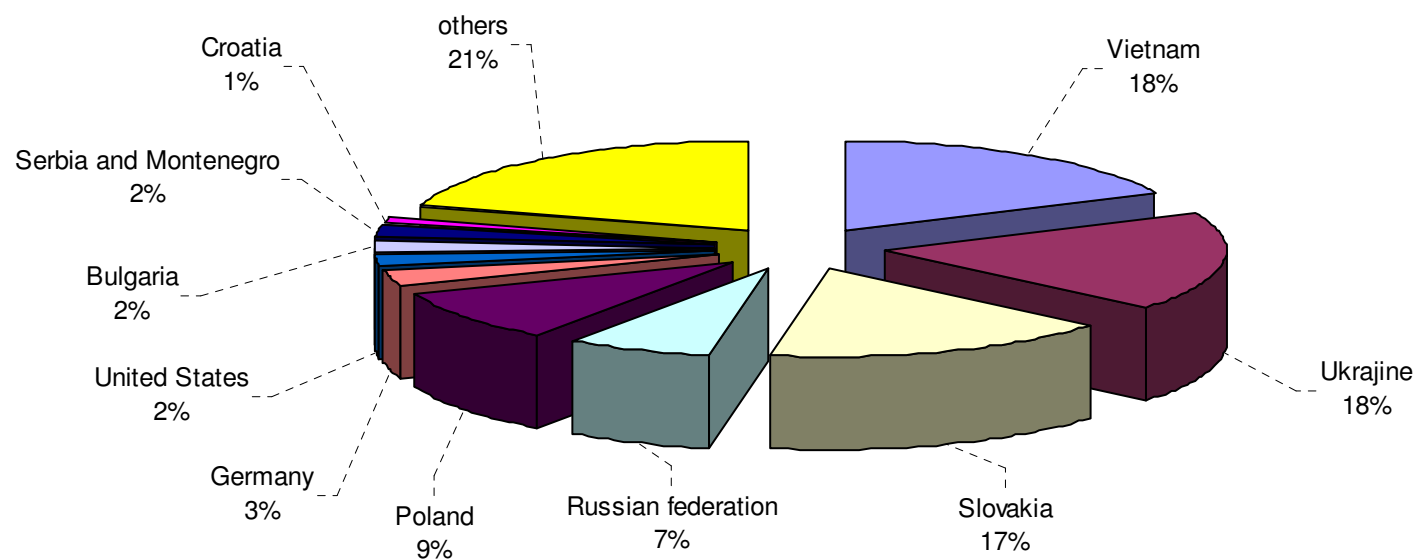


---

CIZINCI POBÝVAJÍCÍ V ČR ZA ÚČELEM SLOUČENÍ RODINY  
PODLE STÁTNÍHO OBČANSTVÍ V PROCENTECH  
FOREIGNERS HOLDING RESIDENCE PERMIT FOR THE PURPOSE OF  
FAMILY REUNIFICATION BY STATE CITIZENSHIP

k/as at 31.12.2006

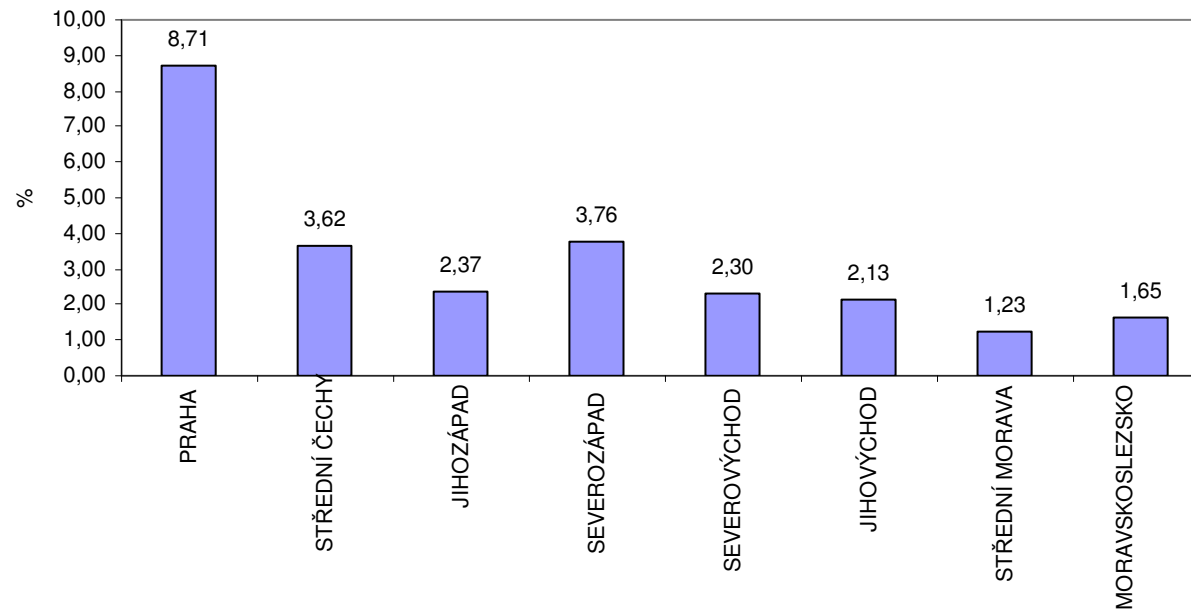
(Source: Czech Statistical Office, independent division of specific statistics.)



## CIZINCI S POVOLENÍM K POBYTU PODLE NUTS 2 RESIDENT PERMIT HOLDERS BY NUTS 2

k 31.12.2006; as at 31.12.2006

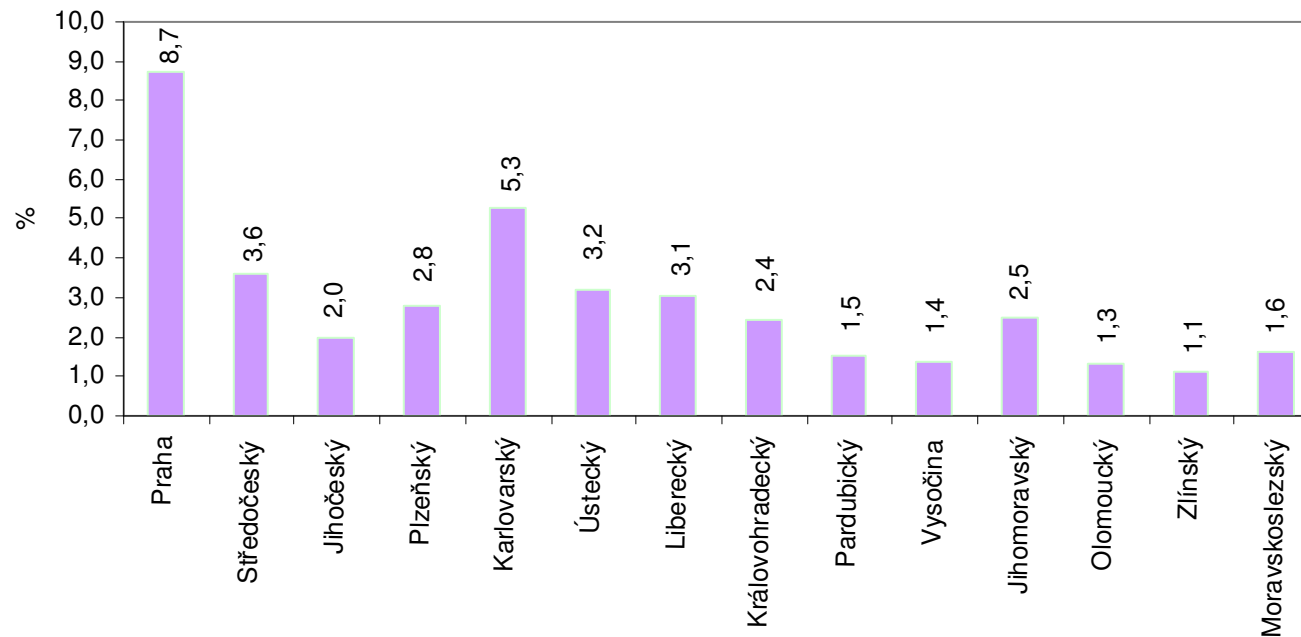
(Source: data from the Alien and Border Police Service of the Czech Republic)



## CIZINCI S POVOLENÍM K POBYTU PODLE NUTS 3 RESIDENT PERMIT HOLDERS NUTS 3

k 31.12.2006; as at 31.12.2006

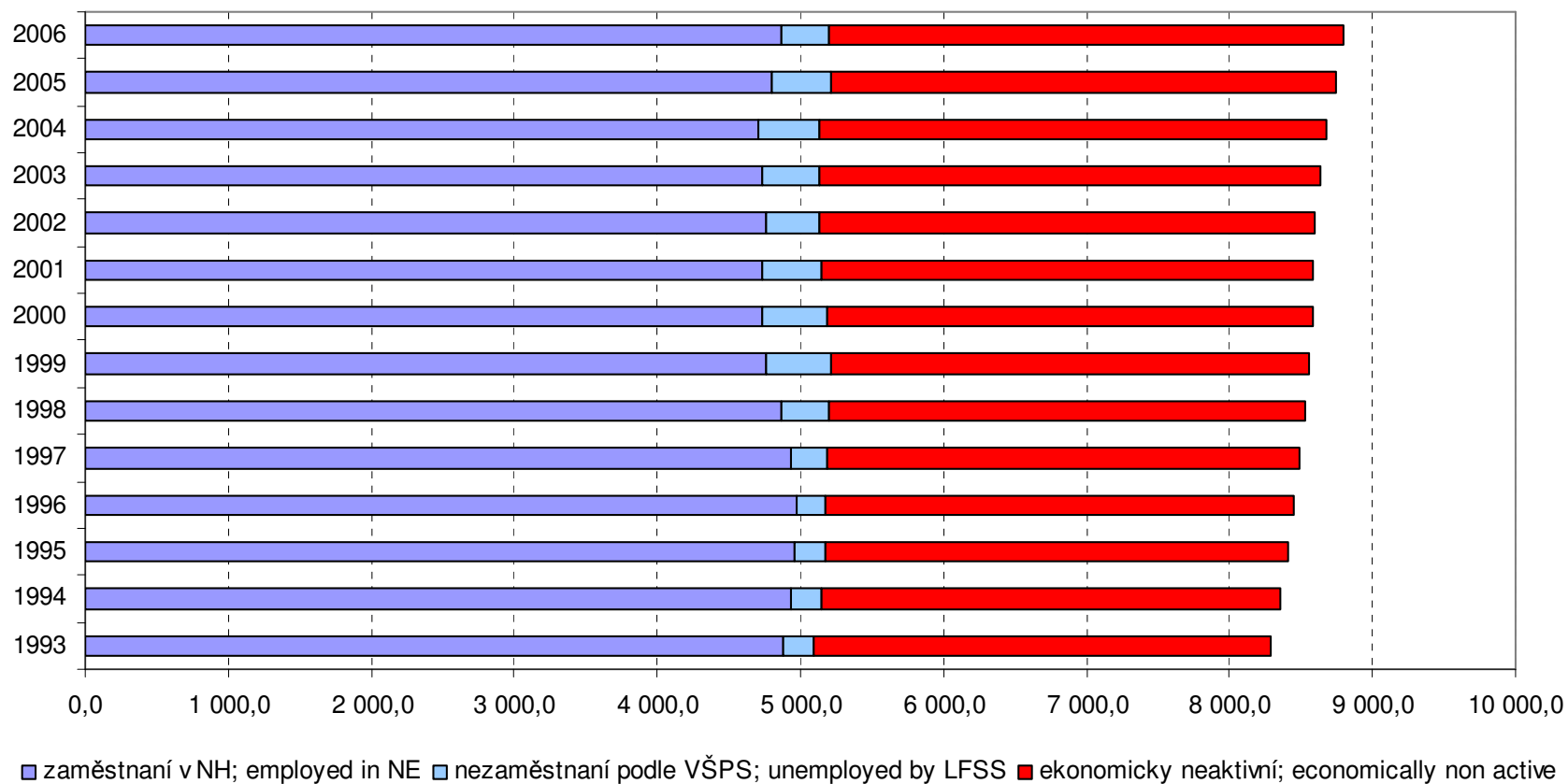
(Source: data from the Alien and Border Police Service of the Czech Republic)



# VÝVOJ ZAMĚSTNANOSTI OBYVATELSTVA ČESKÉ REPUBLIKY EMPLOYMENT DEVELOPMENT OF THE CZECH REPUBLIC POPULATION

1993-2006

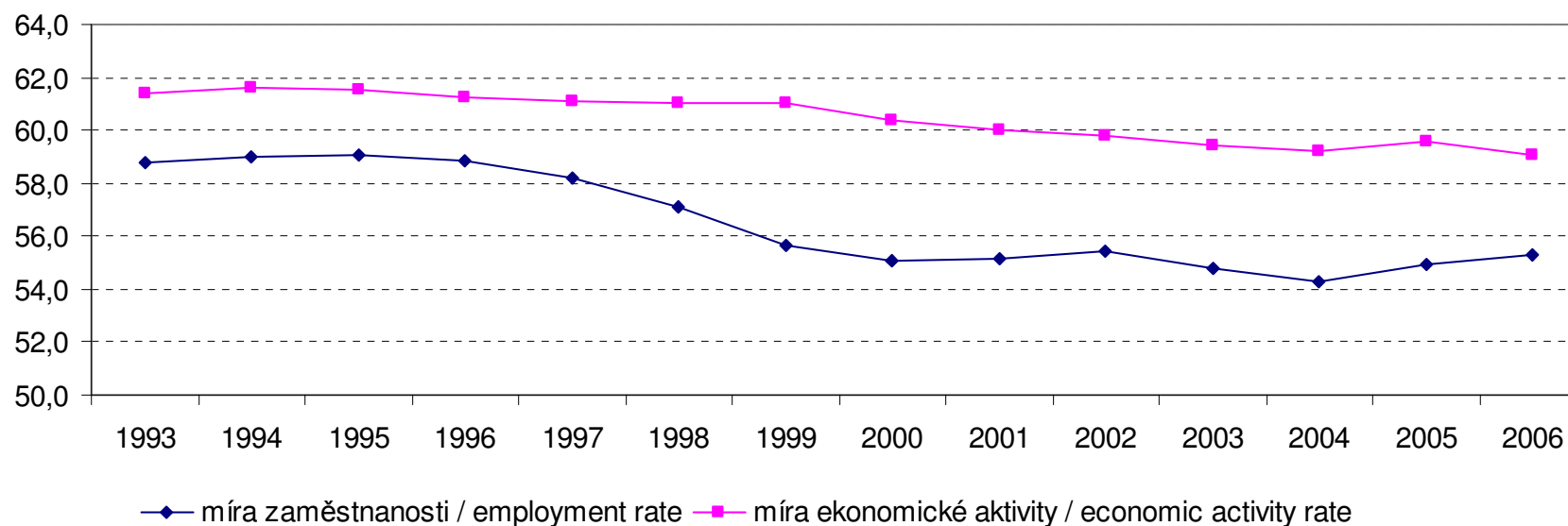
Pramen: ČSÚ/VŠPS –Source: CZSO/LFSS



# VÝVOJ MÍRY ZAMĚSTNANOSTI A MÍRY EKONOMICKÉ AKTIVITY OBYVATELSTVA ČESKÉ REPUBLIKY

## EMPLOYMENT RATE AND RATE OF ECONOMIC ACTIVITY DEVELOPMENT OF THE CZECH REPUBLIC POPULATION 1993-2006 (ROČNÍ PRŮMĚRY - YEAR AVERAGES)

Pramen: ČSÚ/VŠPS – Source: CZSO/LFSS

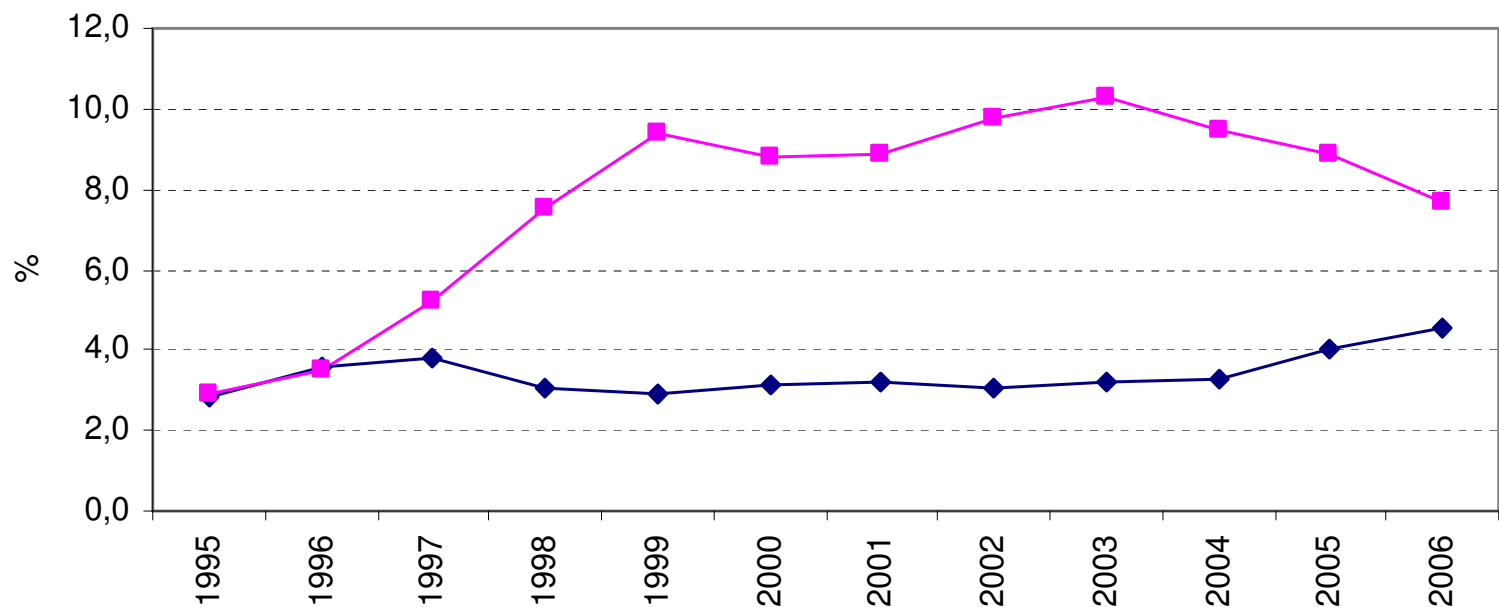




# ZAMĚSTNANOST CIZINCŮ A MÍRA REGISTROVANÉ NEZAMĚSTNANOSTI

## EMPLOYMENT OF FOREIGNERS AND REGISTERED UNEMPLOYMENT; 1995-2006 (31.12.)

Pramen: MPSV-SSZ, MPO; Source: MLSA-ESA, MIT



—◆— podíl cizinců na zaměstnanosti (pracovní síle) v ČR v %; proportion of foreigners on labour force

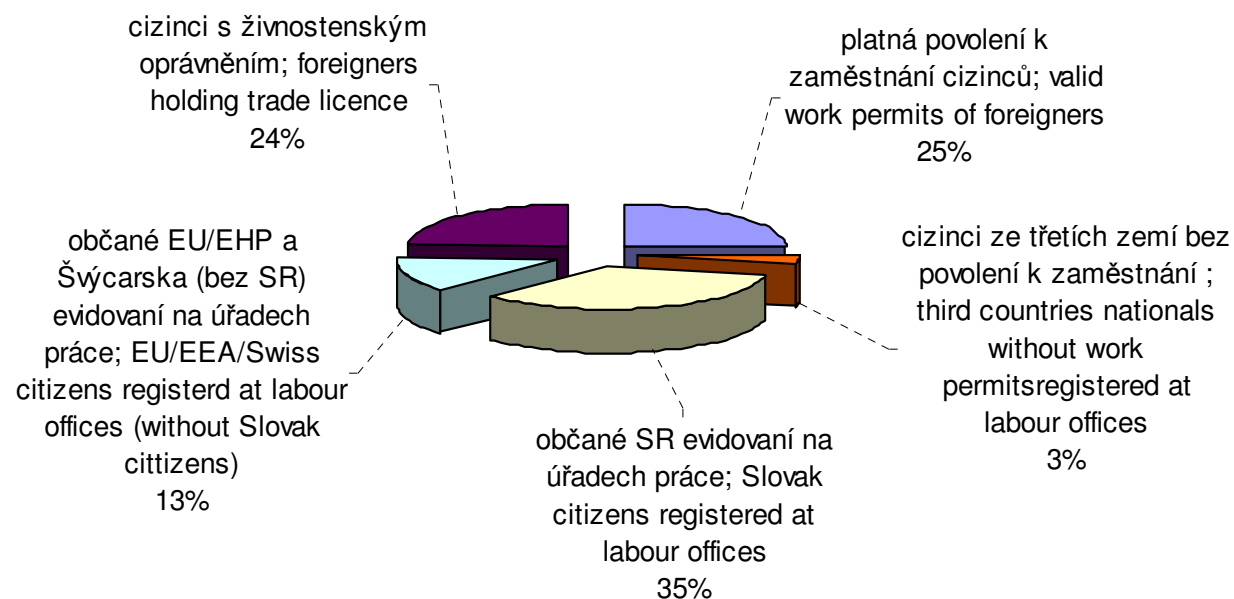
—■— míra registrované nezaměstnanosti v %; registered unemployment rate

---

# STRUKTURA ZAMĚSTNANOSTI CIZINCŮ K 30.6.2007

## EMPLOYMENT STRUCTURE OF FOREIGNERS AS AT 30.6.2007

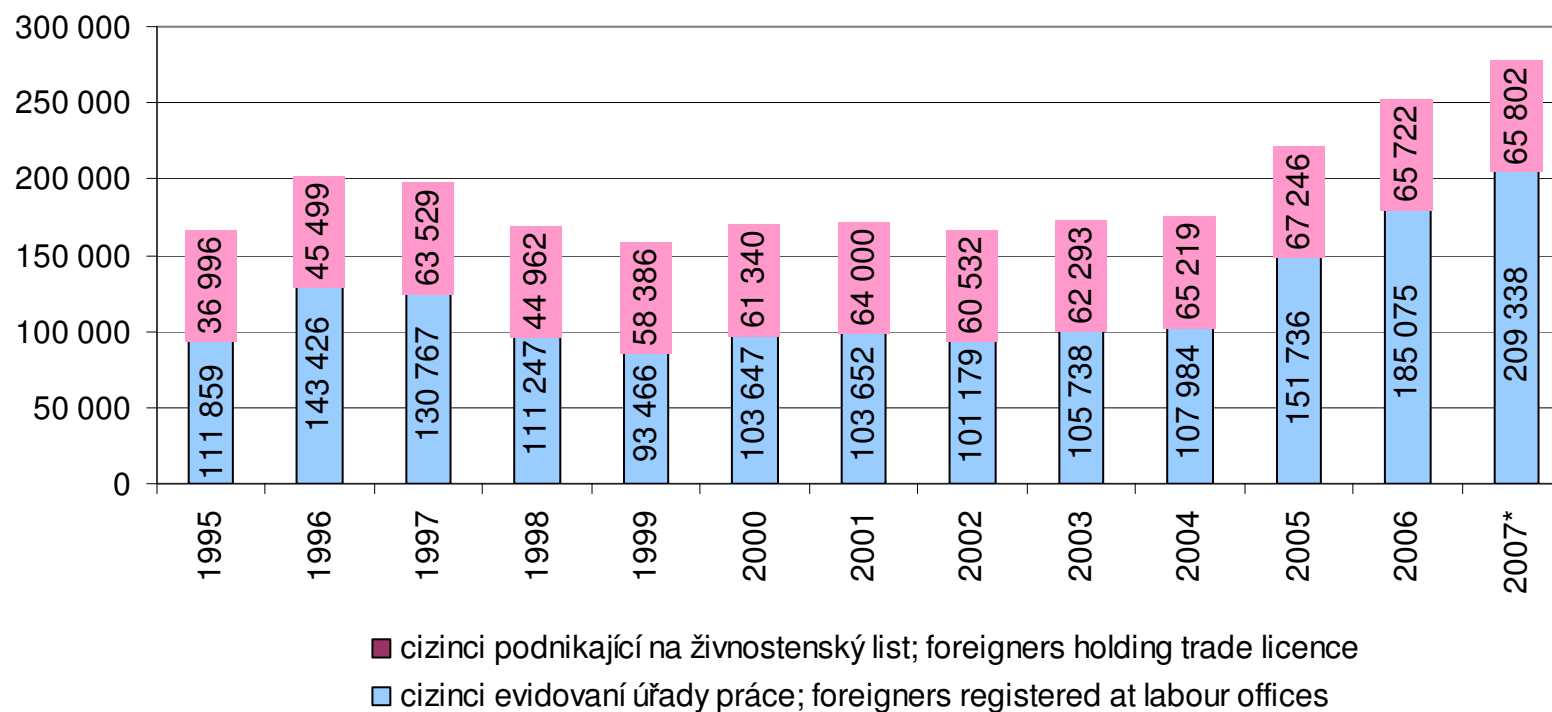
Pramen: MPSV-SSZ, MPO; Source: MLSA-ESA, MIT



# VÝVOJ ZAMĚSTNÁNÍ A ŽIVNOSTENSKÉHO PODNIKÁNÍ CIZINCŮ DEVELOPMENT OF EMPLOYMENT AND TRADES OF FOREIGNERS

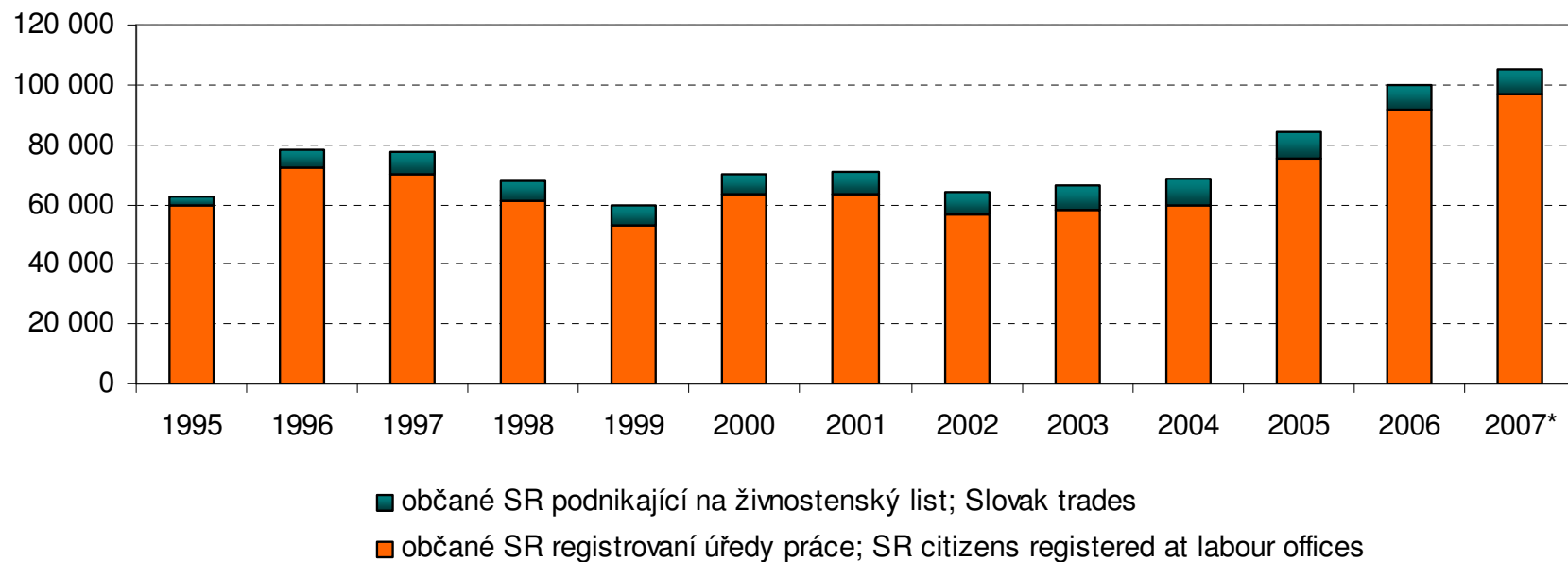
1995-2007 (31.12/\*30.6.)

Pramen: MPSV-SSZ, MPO; Source: MLSA-ESA, MIT



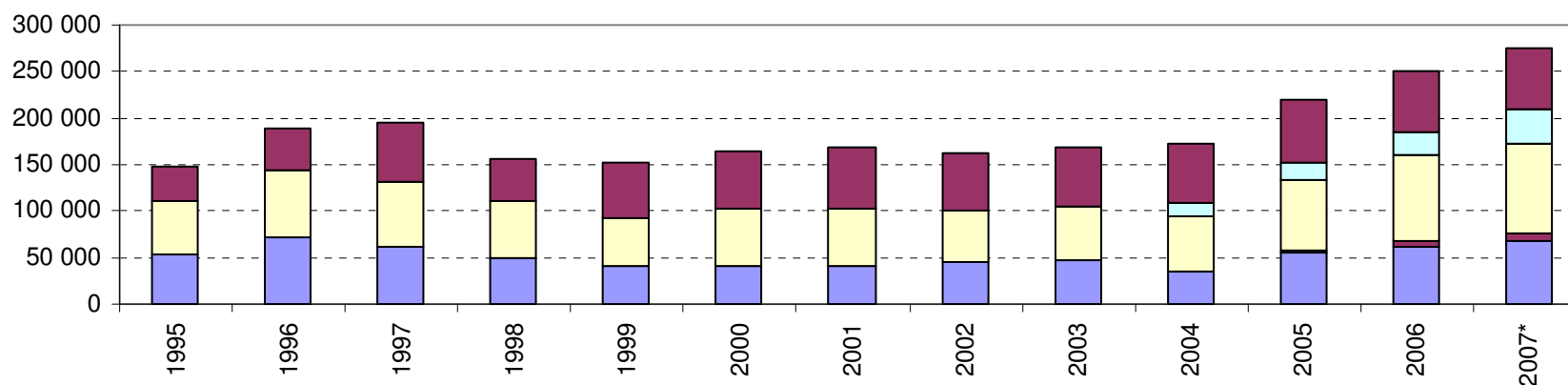
VÝVOJ ZAMĚSTNÁNÍ A ŽIVNOSTENSKÉHO PODNIKÁNÍ  
SLOVENSKÝCH OBČANŮ  
DEVELOPMENT OF EMPLOYMENT AND TRADES OF  
SLOVAK CITIZENS  
1995-2007\* (31.12/\*30.6)

Pramen: MPSV-SSZ, MPO; Source: MLSA-ESA, MIT



# VÝVOJ FOREM EKONOMICKÝCH AKTIVIT CIZINCŮ FOREIGNERS' ECONOMIC ACTIVITIES FORMS DEVELOPMENT 1995-2007 (K 31.12/\*30.6)

Pramen: MPSV-SSZ, MPO; Source: MLSA-ESA, MIT

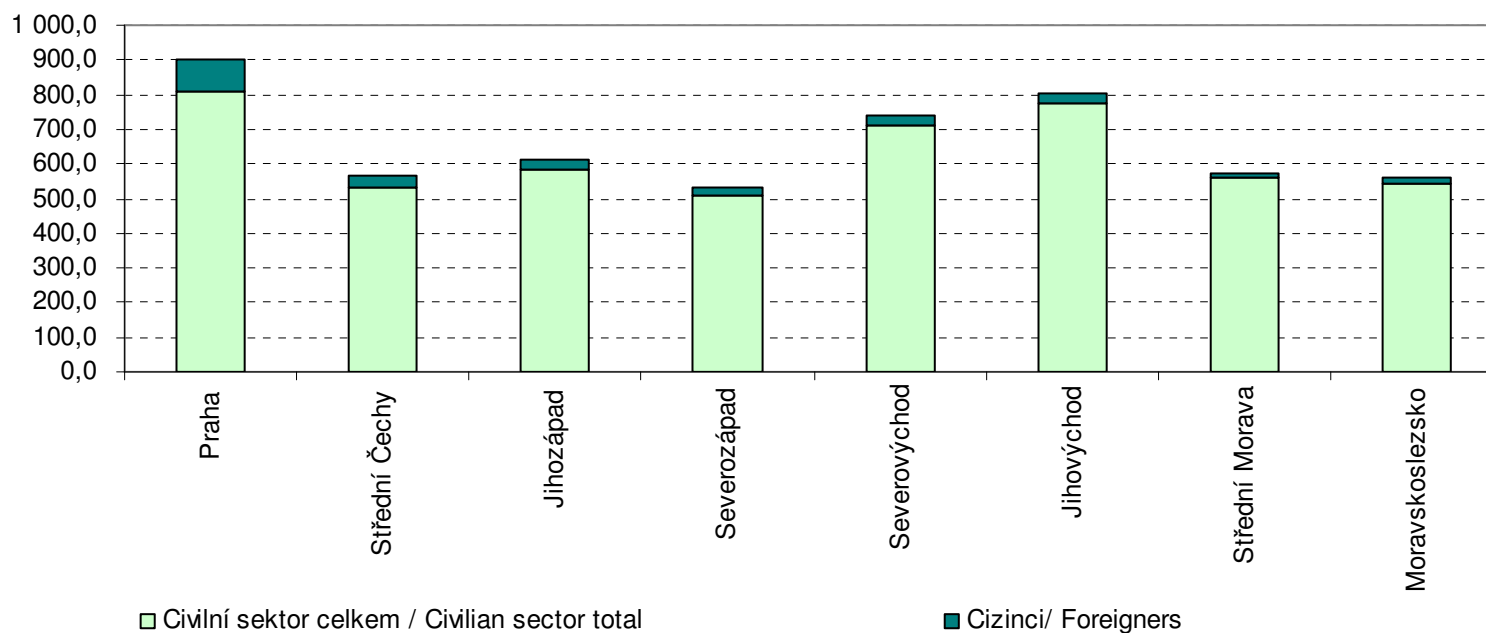


- cizinci s živnostenským oprávněním; foreigner holding trade licence
- občané EU/EHP a Švýcarska (bez SR) evidovaní na úřadech práce; EU/EEA and Swiss citizens registered at labour offices (without Slovak citizens)
- občané SR evidovaní na úřadech práce; Slovak citizens registered at labour offices
- cizinci z třetích zemí bez povolení k zaměstnání; registration at labour office of third countries nationals without work permit
- platná povolení k zaměstnání cizinců; work permits

# ZAMĚSTNANOST OBYVATELSTVA ČESKÉ REPUBLIKY PODLE NUTS 2 V TIS – R. 2006

## EMPLOYMENT OF THE CR POPULATION BY NUTS 2 IN THOUSANDS – YR 2006

Pramen: ČSÚ; Source CSO



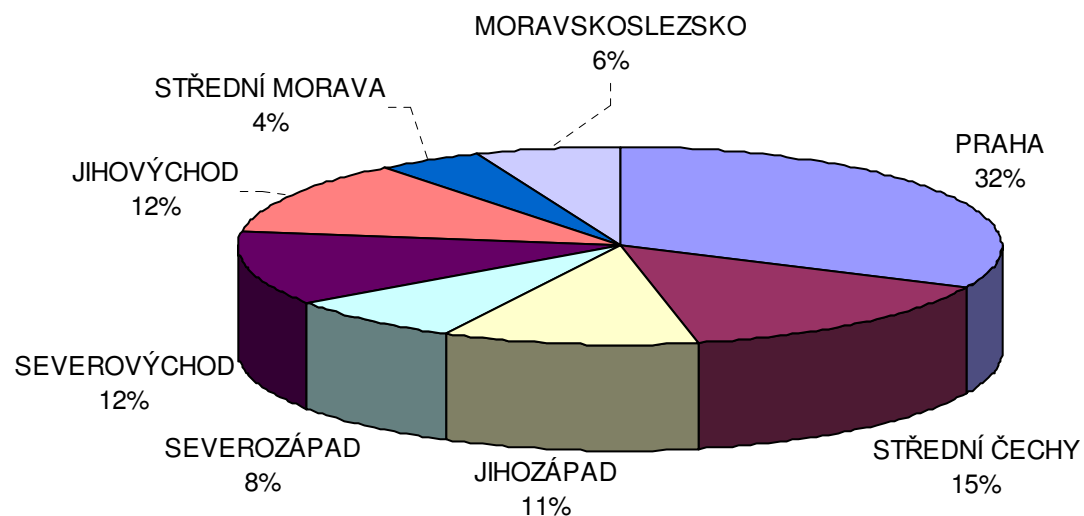
\* roční průměry/ annual averages

---

# ZAMĚSTNANOST CIZINCŮ V OBLASTECH NUTS2 EMPLOYMENT OF FOREIGNERS IN NUTS 2 REGIONS

31.12. 2006

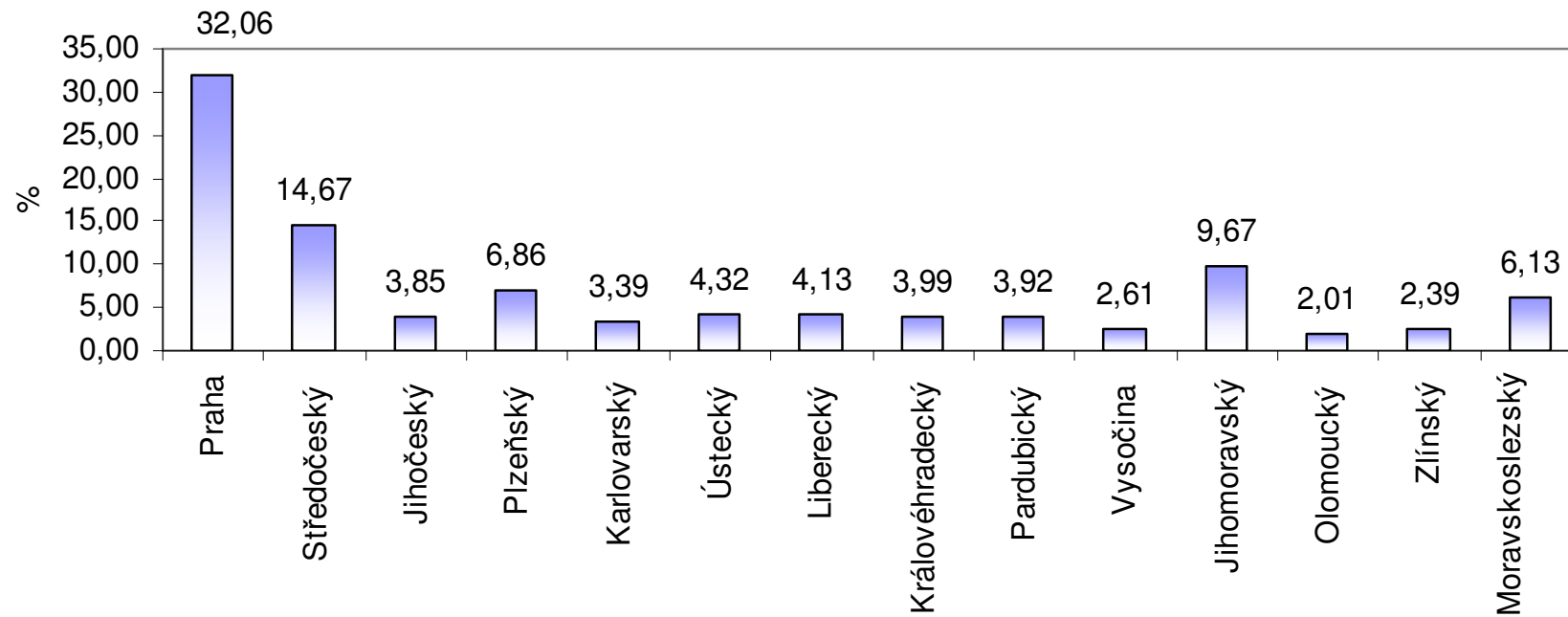
Pramen: MPSV-SSZ, MPO; Source: MLSA-ESA, MIT



# ZAMĚSTNANOST CIZINCŮ V KRAJÍCH NUTS 3 EMPLOYMENT OF FOREIGNERS IN NUTS 3 REGIONS

31.12.2006

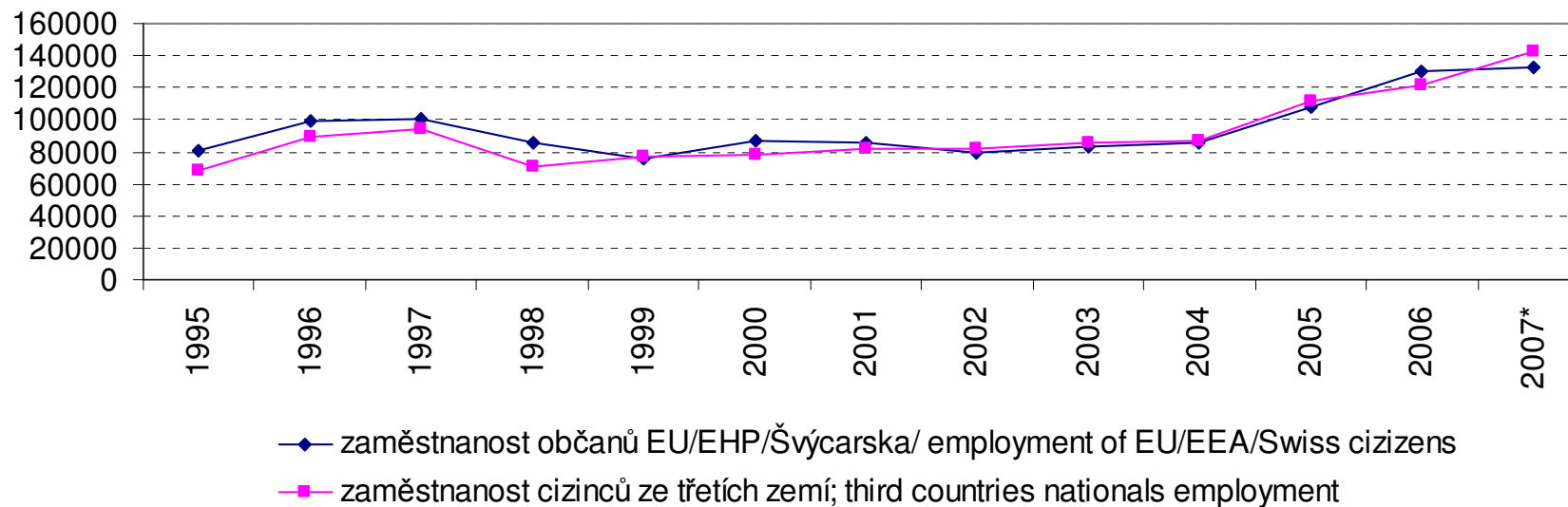
Pramen: MPSV-SSZ, MPO; Source: MLSA-ESA, MIT





# VÝVOJ ZAMĚSTNANOSTI PODLE ZDROJOVÝCH REGIONŮ EMPLOYMENT DEVELOPMENT BY SOURCE REGIONS 1995-2007(31.12/\*30.6)

Pramen: MPSV-SSZ, MPO; Source: MLSA-ESA, MIT

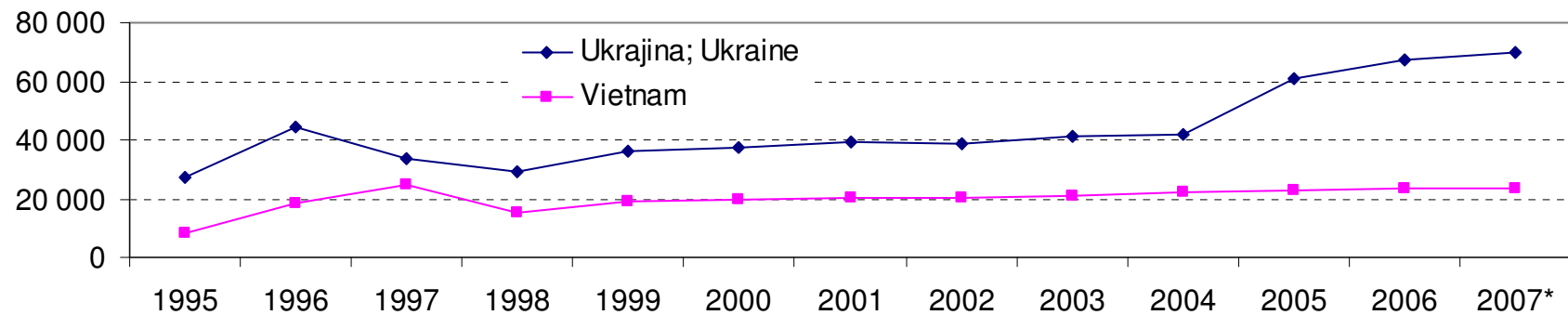


# VÝVOJ ZAMĚSTNANOSTI NEJVÝZNAMNĚJŠÍCH SKUPIN CIZINCŮ ZE TŘETÍCH ZEMÍ

## EMPLOYMENT OF MOST IMPORTANT GROUPS OF THIRD COUNTRIES NATIONALS

1995-2007(31.12/\*30.6)

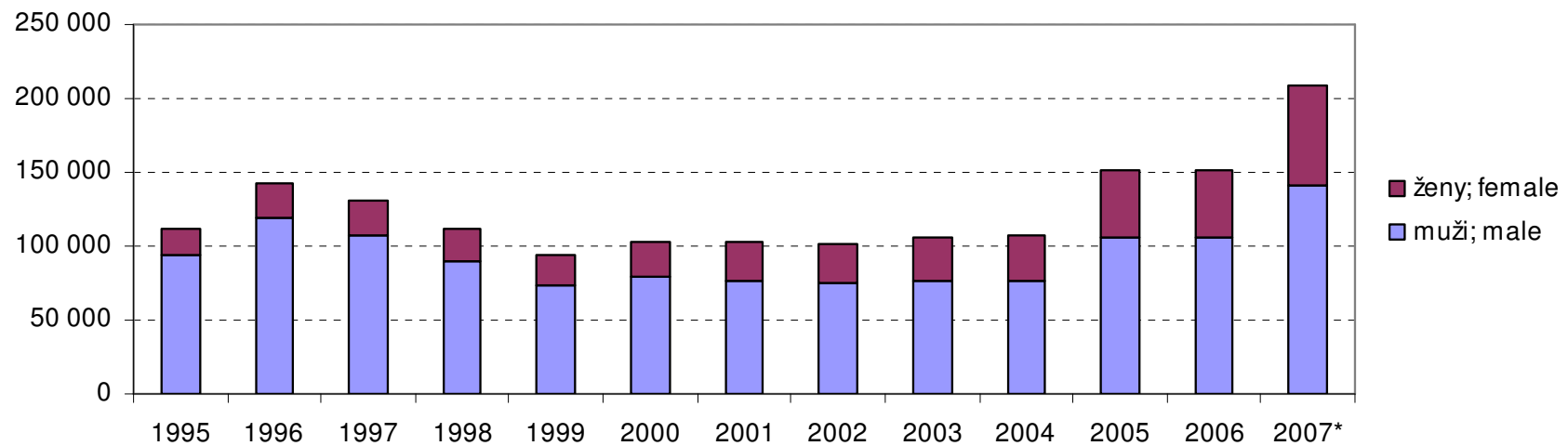
Pramen: MPSV-SSZ, MPO; Source: MLSA-ESA, MIT



# VÝVOJ ZAMĚSTNANOSTI CIZINCŮ PODLE POHLAVÍ EMPLOYMENT DEVELOPMENT OF FOREIGNERS BY GENDER

1995-2007(31.12/\*30.6)

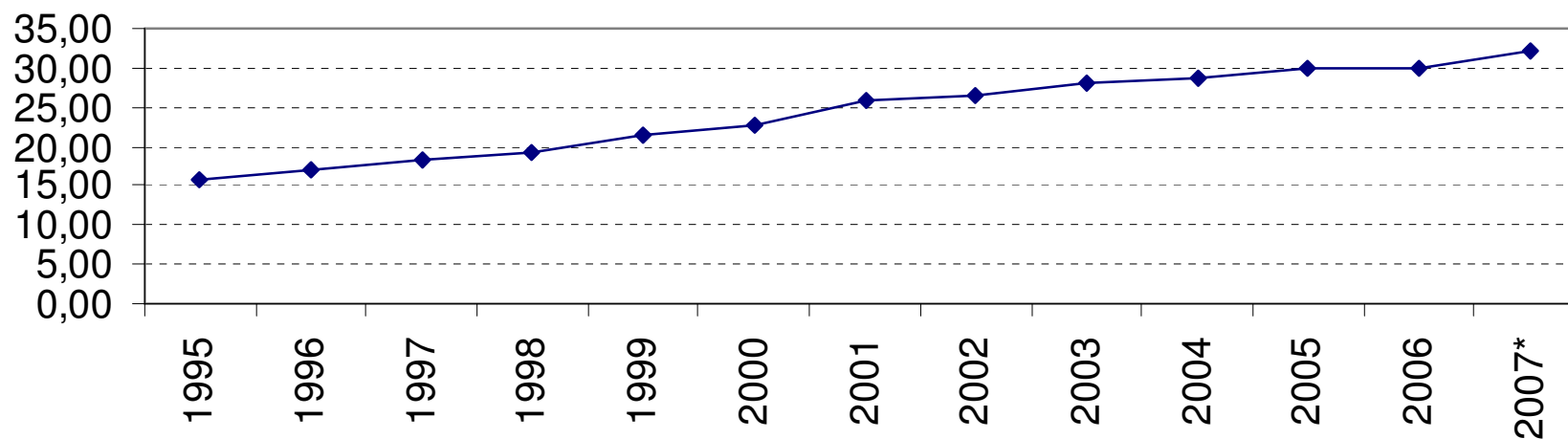
Pramen: MPSV-SSZ, MPO; Source: MLSA-ESA, MIT



PODÍL ŽEN NA ZAMĚSTNANOSTI CIZINCŮ  
PROPORTION OF FEMALES ON FOREIGNERS' EMPLOYMENT  
1995-2007 (31.12/\*30.6.)

Pramen: MPSV-SSZ, MPO; Source: MLSA-ESA, MIT

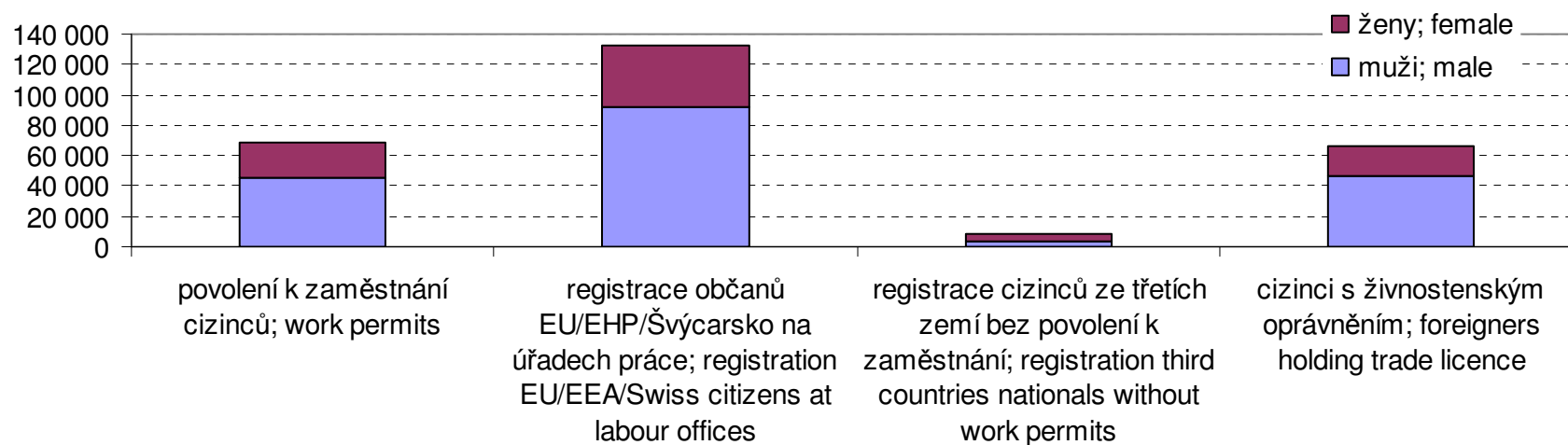
podíl žen v %; share of women in %



# ZAMĚSTNANOST CIZINCŮ DLE POHLAVÍ EMPLOYMENT OF FOREIGNERS BY GENDER

30.6.2007

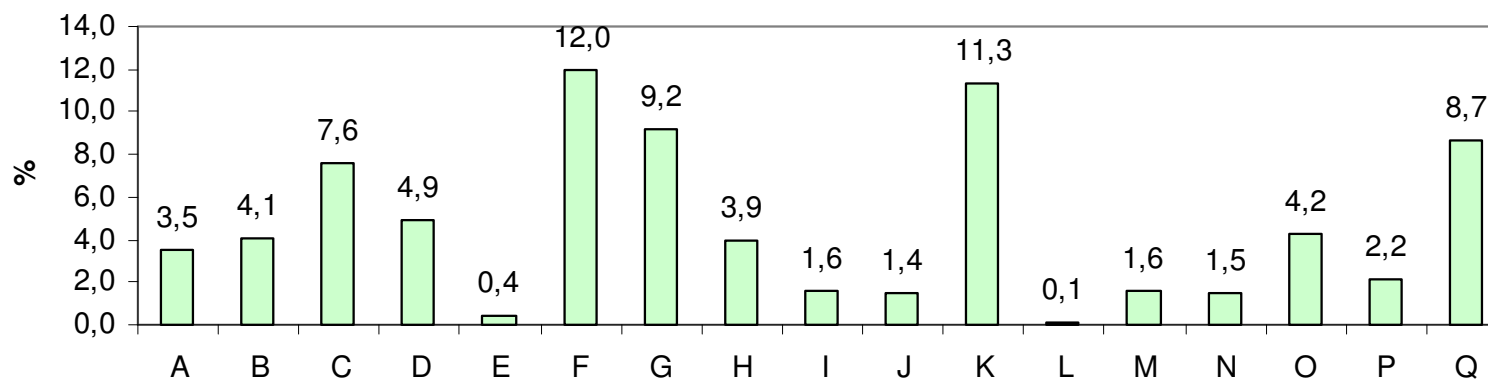
Pramen: MPSV-SSZ, MPO; Source: MLSA-ESA, MIT



## OKEČ/NACE - CZ

- A. Zemědělství, myslivost, lesnictví a související činnosti / Agriculture, hunting, forestry and related service activities  
Rybolov a chov ryb / Fishing, operation of fish hatcheries and fish farms
- C. Těžba nerostných surovin / Mining and quarrying
- D. Zpracovatelský průmysl / Manufacturing
- E. Výroba a rozvod elektřiny, plynu a vody / Electricity, gas and water supply
- F. Stavebnictví / Construction
- G. Obchod; opravy motorových vozidel a výrobků pro osobní potřebu a převážně pro domácnost / Wholesale and retail trade, repairs of mot. vehicles, personal and household goods
- H. Ubytování a stravování / Hotels and restaurants
- I. Doprava, skladování, a spoje / Transport, storage and communications
- J. Finanční zprostředkování / Financial intermediation
- K. Činnosti v oblasti nemovitostí a pronájmu; podnikatelské činnosti / Real estate, renting and business activities
- L. Veřejná správa a obrana; povinné sociální zabezpečení / Public administration and defence, compulsory social security
- M. Vzdělávání / Education
- N. Zdravotní a sociální péče; veterinární činnosti / Health and social work
- O. Ostatní veřejné, sociální a osobní služby / Others community, social and personal services
- P. Činnosti domácností / Private households with employed persons
- Q. Exteritoriální organizace a instituce / Extra-territorial organization and bodies

PODÍL CIZINCŮ NA ZAMĚSTNANOSTI V ODVĚTVÁCH NÁRODNÍHO  
HOSPODÁŘSTVÍ V ČLENĚNÍ PODLE OKEČ; PROPORTION OF FOREIGNERS  
ON EMPLOYMENT BY BRANCHES OF NATIONAL ECONOMY BY NACE - CZ;  
2006 - ROČNÍ PRŮMĚR/YEAR AVERAGE



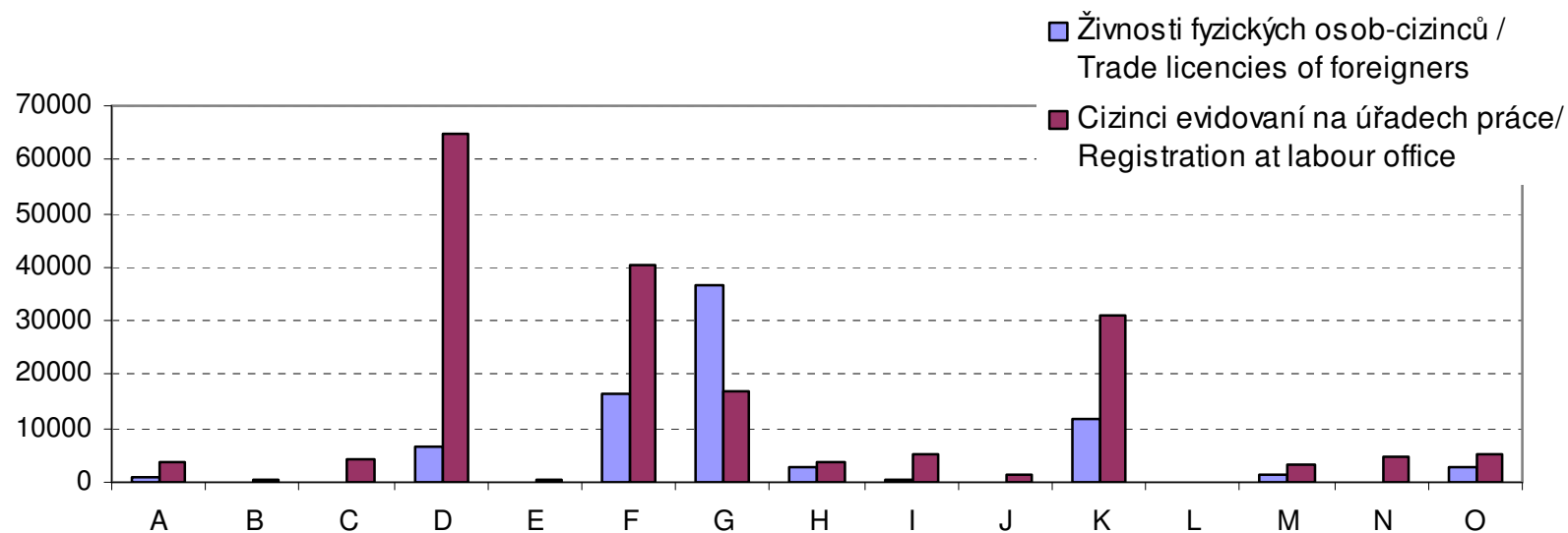
Pramen: ČSÚ – VŠPS;

Source: CZSO - LFSS

# FORMY EKONOMICKÝCH AKTIVIT CIZINCŮ PODLE OKEČ; ECONOMIC ACTIVITIES FORMS OF FOREIGNERS BY NACE-CZ;

31.12. 2006

Pramen: MPSV-SSZ, MPO; Source: MLSA-ESA, MIT

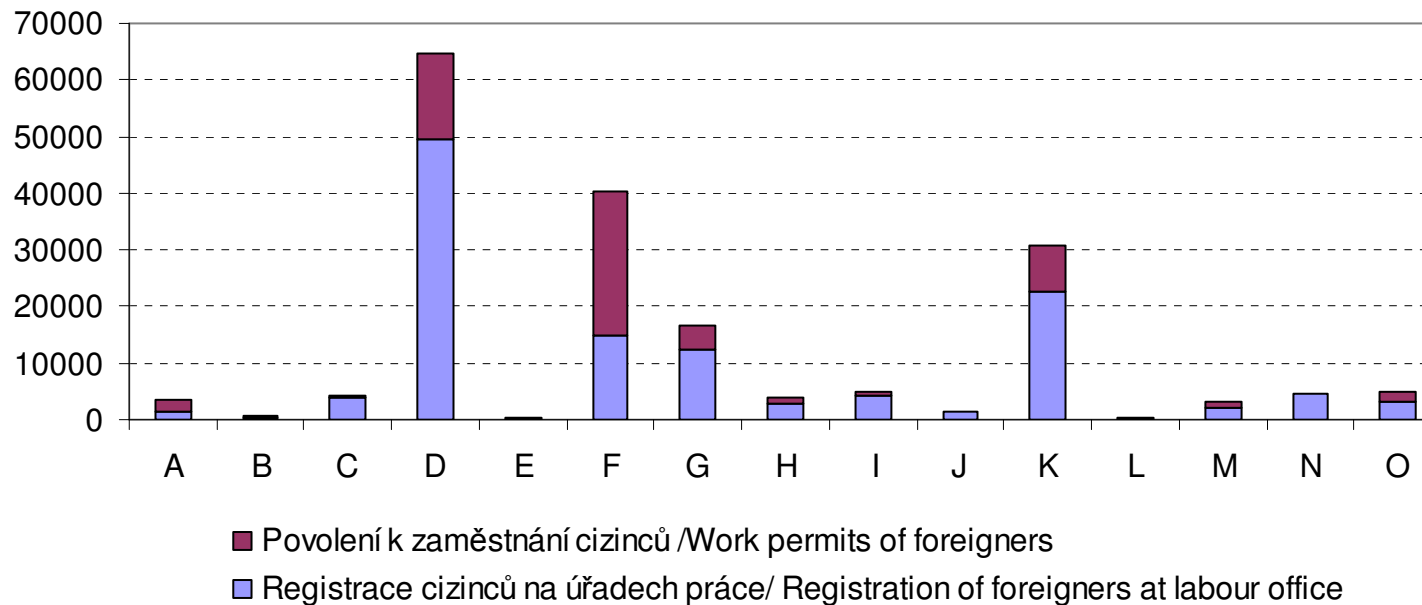




# CIZINCI EVIDOVANÍ NA ÚŘADECH PRÁCE PODLE OKEČ FOREIGNERS REGISTERED AT LABOUR OFFICES BY NACE - CZ

31.2.2006

Pramen: MPSV-SSZ; Source: MLSA-ESA

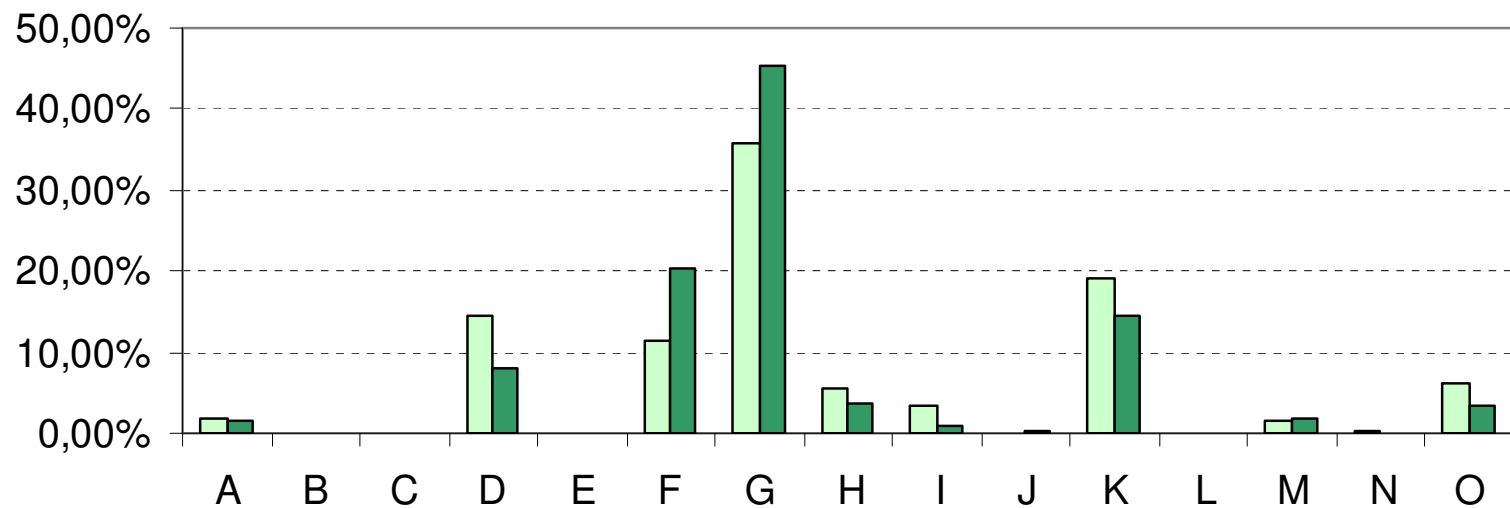


# ŽIVNOSTENSKÁ OPRAVNĚNÍ FYZICKÝCH OSOB OBČANŮ ČR A CIZINCŮ

## TRADE LICENCES OF THE CR CITIZENS AND FOREIGNERS

(ČR=100%) 31.12.2006

Pramen: MPO; Source: MIT



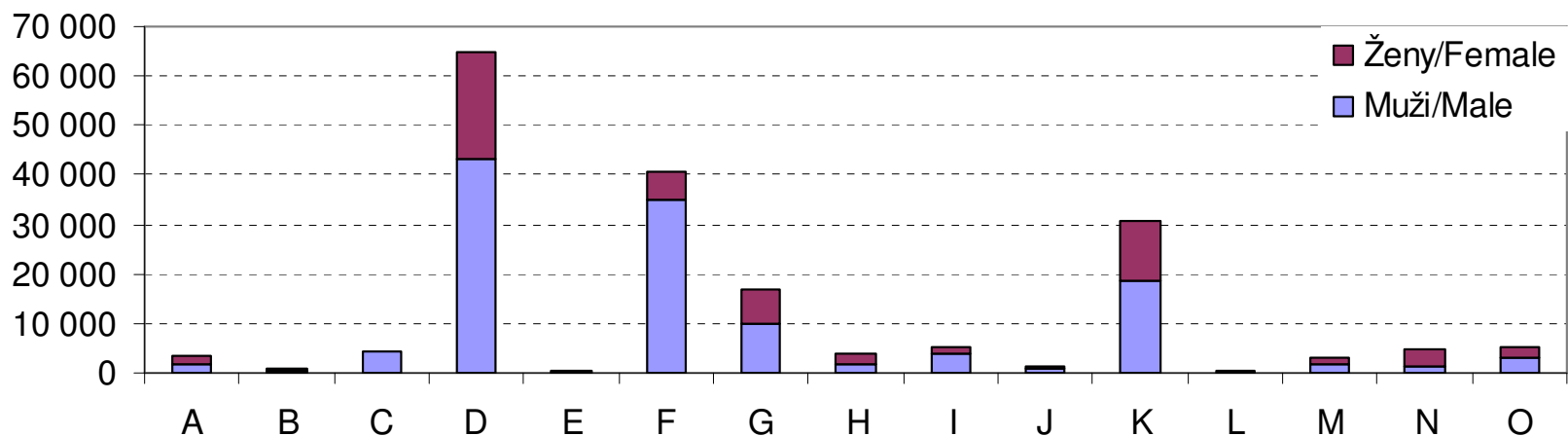
□ Živnostenská oprávnění fyzických osob-občanů ČR; Trade licencies of the CR citizens

■ Živnostenská oprávnění fyzických osob-cizinců/ Trade licencies of foreigners

# CIZINCI EVIDOVANÍ NA ÚŘADECH PRÁCE PODLE POHLAVÍ A OKEČ FOREIGNERS REGISTERED AT LABOUR OFFICES BY GENDER AND NACE

31.12.2006

Pramen: MPSV-SSZ; Source: MLSA-ESA



---

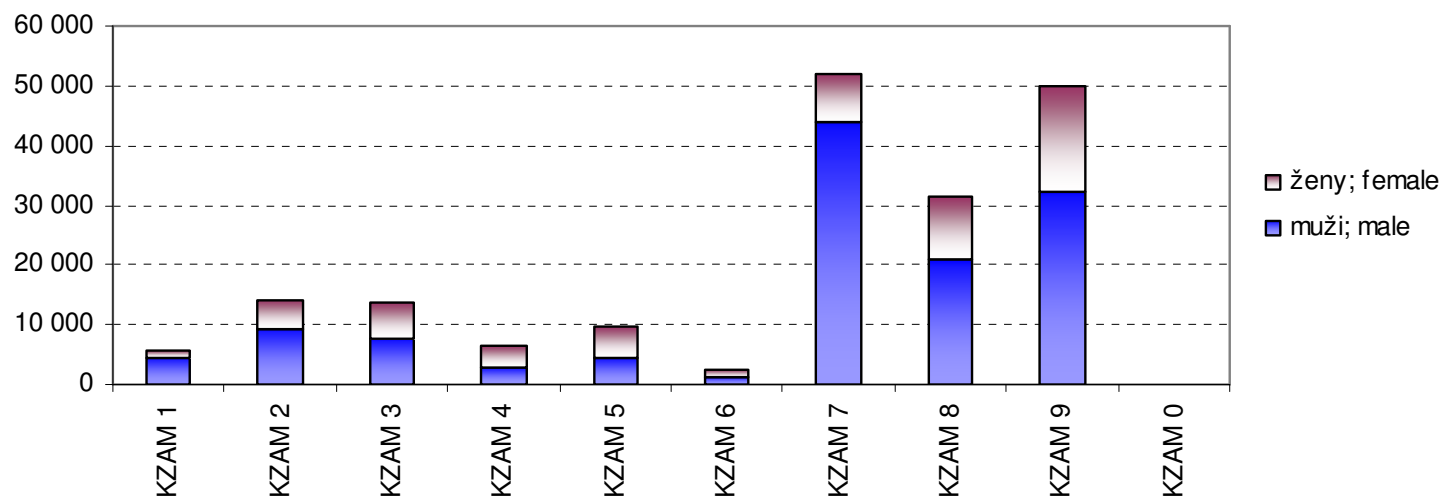
## KZAM/ISCO

- 1 zákonodárci a vedoucí řídící pracovníci; legislators, seniors officials and managers;
  - 2 vědečtí a odborní duševní pracovníci; professionals;
  - 3 techničtí zdravot. a pedagog. pracovníci ; technicians and associate professionals;
  - 4 nižší administrativní pracovníci, úředníci; clerks;
  - 5 provozní pracovníci ve službách a obchodě; service workers and shop and market sales;
  - 6 kvalifikovaní dělníci v zemědělství a lesnictví; skilled agricultural and forestry workers;
  - 7 řemeslníci a kvalifikovaní výrobci, zpracovatelé, opraváři; craft and related trades workers;
  - 8 obsluha strojů a zařízení; plant and machina operators and assemblers;
  - 9 pomocní a nekvalifikovaní pracovníci; elementary occupations;
-

# CIZINCI EVIDOVANÍ NA ÚŘADECH PRÁCE PODLE KZAM FOREIGNERS REGISTERED AT LABOUR OFFICES BY ISCO

31.12.2006

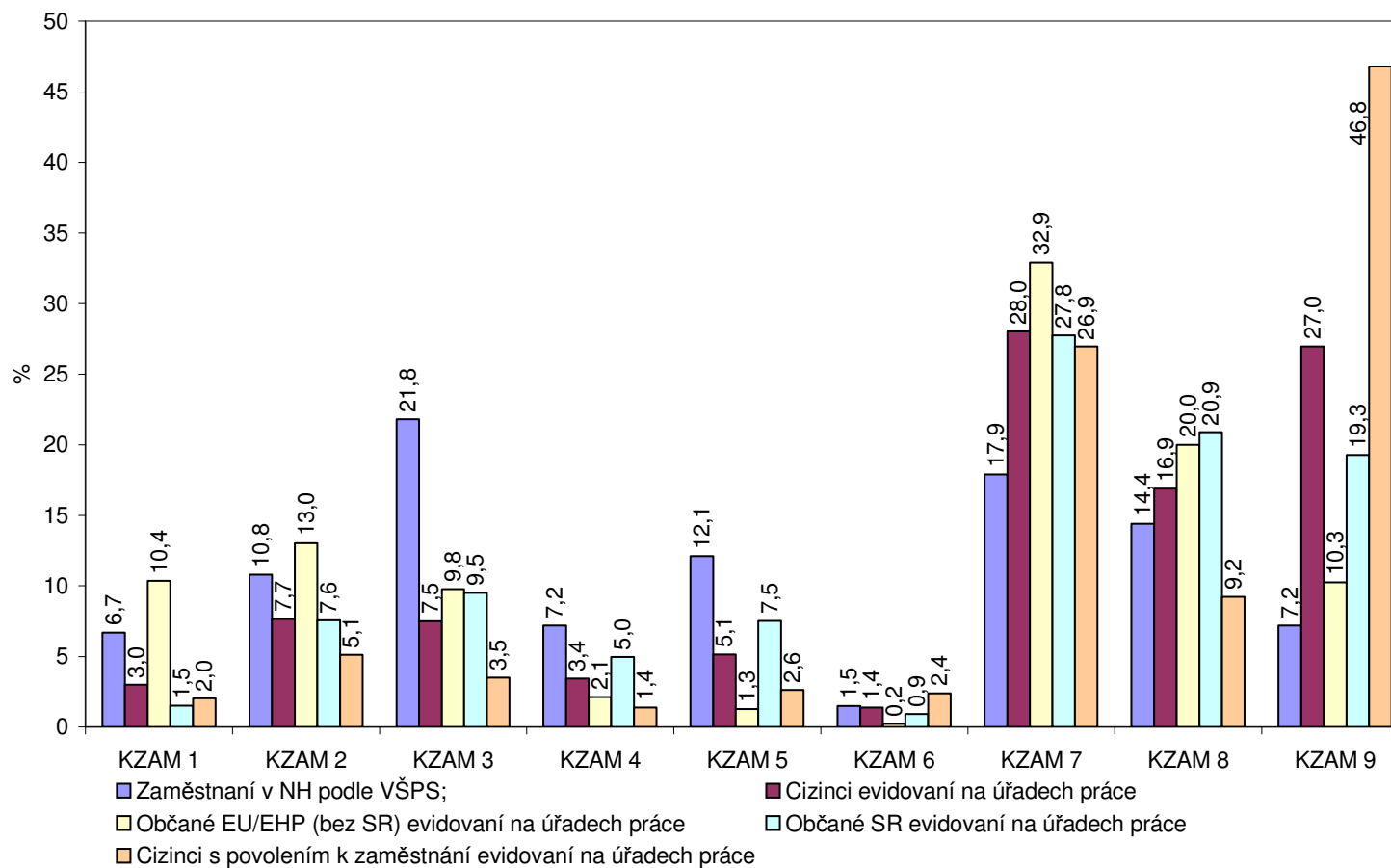
Pramen: MPSV-SSZ; Source: MLSA-ESA



# ZAMĚŠTNANÍ CIZINCI A ZAMĚŠTNANÍ V NH PODLE KZAM EMPLOYED FOREIGNERS AND EMPLOYED IN NE BY ISCO

31.12.2006

Pramen: MPSV-SSZ, ČSÚ; Source: MLSA-ESA, CSO

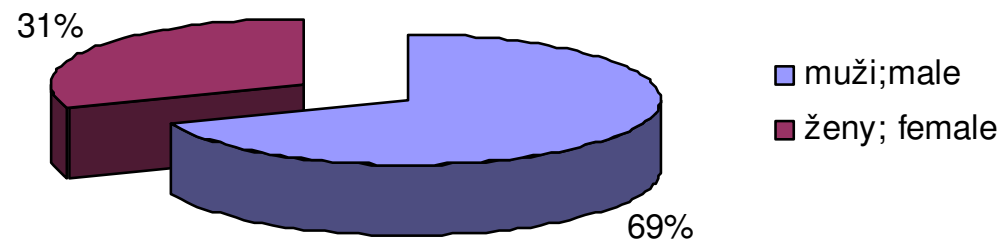


---

# ZAMĚSTNANOST CIZINCŮ PODLE POHLAVÍ EMPLOYMENT OF FOREIGNERS BY GENDER

31.12.2006

Pramen: MPSV-SSZ, MPO; Source: MLSA-ESA, MIT



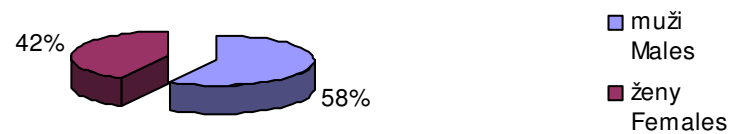
---

# FORMY ZAMĚSTANNOSTI CIZINCŮ PODLE POHLAVÍ EMPLOYMENT FORMS OF FOREIGNERS BY GENDER

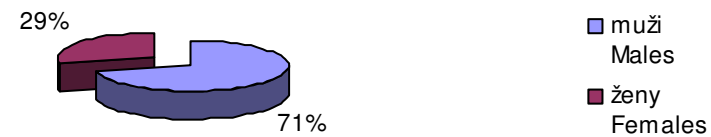
31.12.2006

Pramen: MPSV-SSZ, MPO; Source: MLSA-ESA, MIT

**CIZINCI EVIDOVANÍ NA ÚŘADECH PRÁCE; FOREIGNERS  
REGISTERED AT LABOUR OFFICES**



**CIZINCI S PLATNÝM ŽIVNOSTENSKÝM OPRÁVNĚNÍM; FOREIGNERS  
HOLDING VALID TRADE LICENCE**





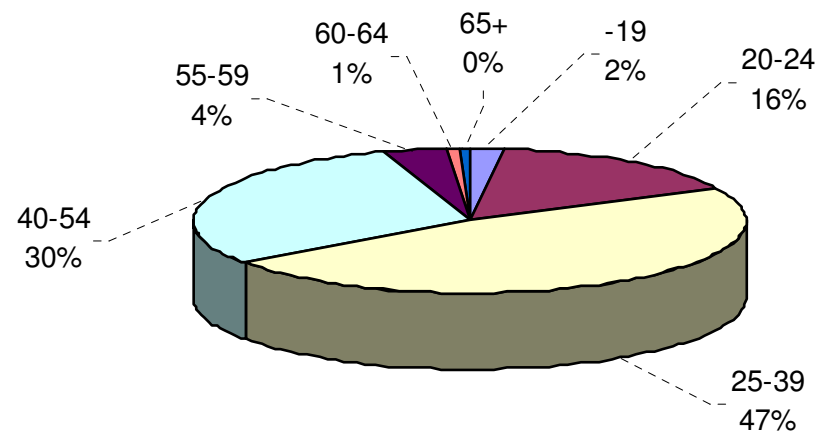
---

# ZAMĚSTNANOST CIZINCŮ PODLE VĚKOVÝCH SKUPIN EMPLOYMENT OF FOREIGNERS BY AGE GROUPS

31.12.2006

Pramen: MPSV-SSZ, MPO; Source: MLSA-ESA, MIT

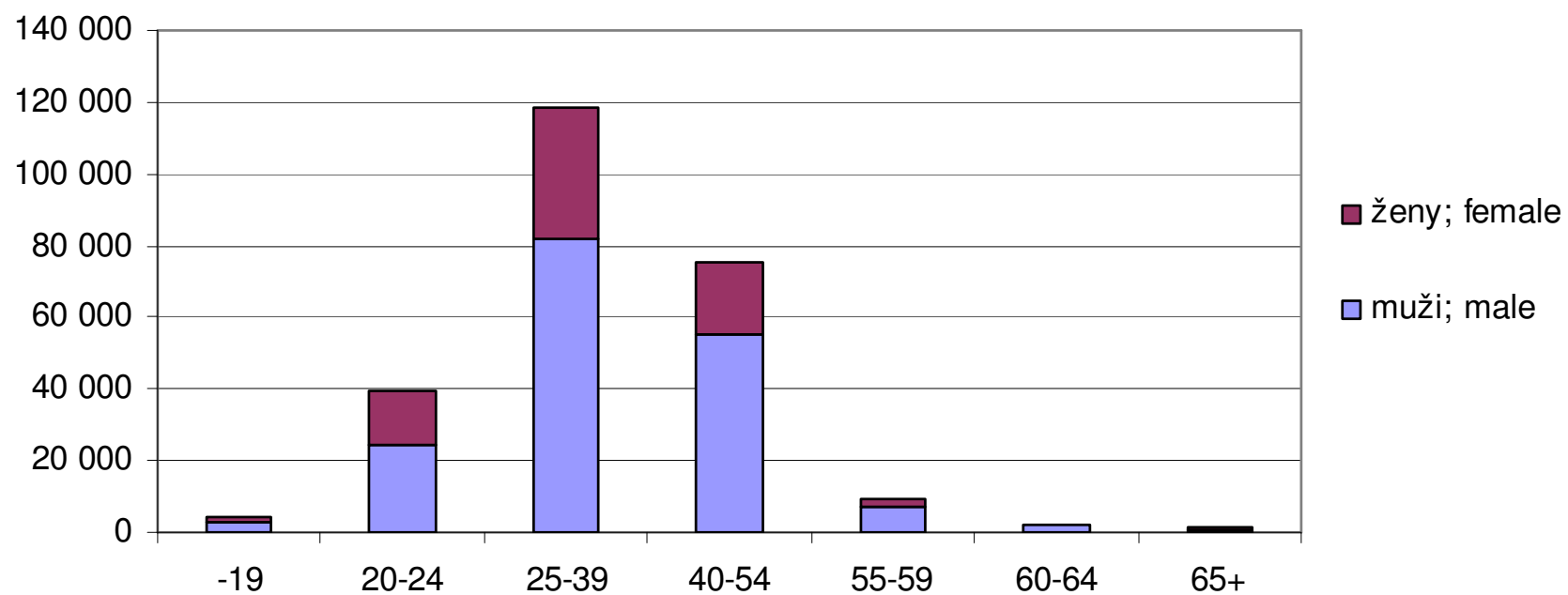
**Zaměstnanost cizinců (evidovaných úřady práce a cizinců podnikajících na základě živnostenského oprávnění) podle věku**



# ZAMĚSTNANOST CIZINCŮ PODLE VĚKU A POHLAVÍ EMPLOYMENT OF FOREIGNERS BY AGE AND GENDER

31.12.2006

Pramen: MPSV-SSZ, MPO; Source: MLSA-ESA, MIT



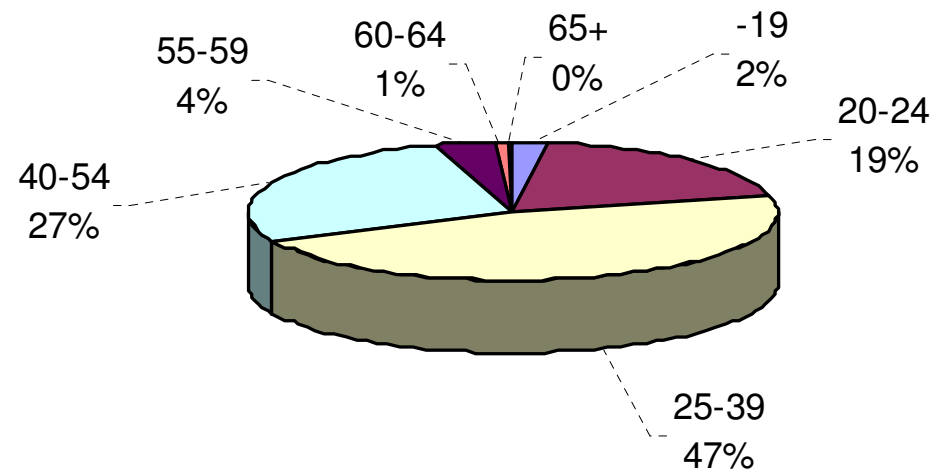
# CIZINCI EVIDOVANÍ NA ÚŘADECH PRÁCE ÚP PODLE VĚKOVÝCH SKUPIN

## FOREIGNERS REGISTERED AT LABOUR OFFICES BY AGE GROUPS

31.12.2006

Pramen: MPSV-SSZ, MPO; Source: MLSA-ESA, MIT

### Cizinci evidovaní na úřadech práce podle věku

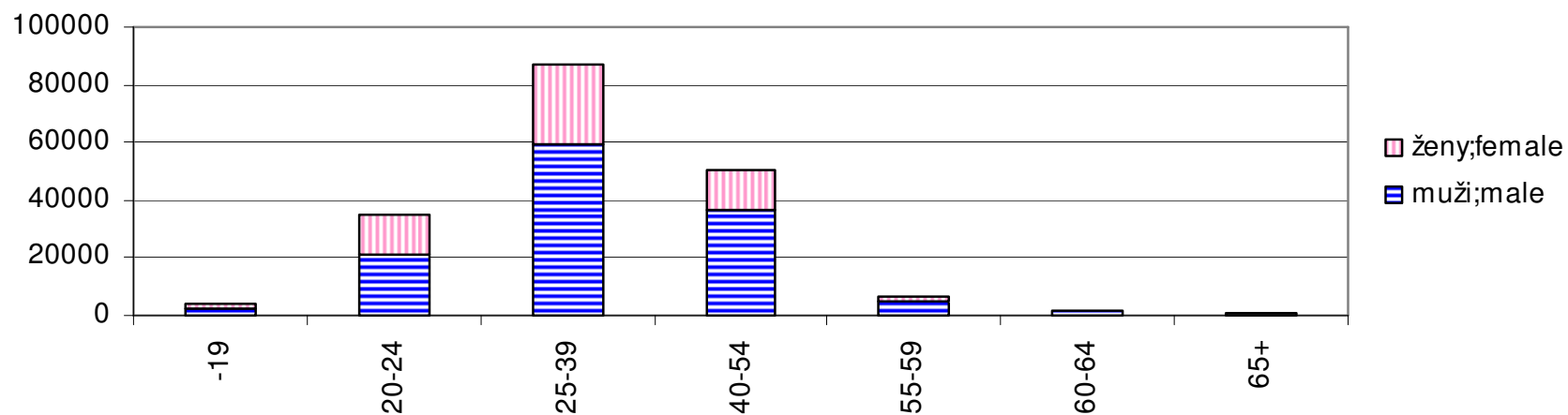


# CIZINCI EVIDOVANÍ NA ÚŘADECH PRÁCE ÚP PODLE VĚKOVÝCH SKUPIN A POHLAVÍ

## FOREIGNERS REGISTERED AT LABOUR OFFICES BY AGE GROUPS AND GENDER

31.12. 2006

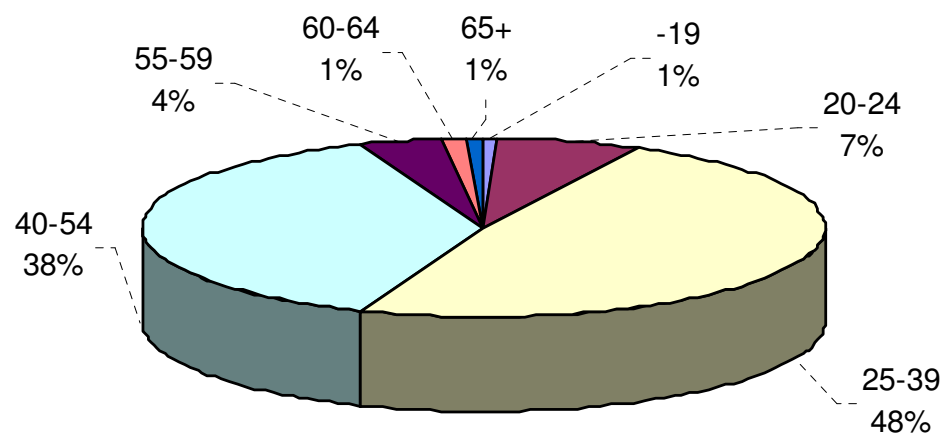
Pramen: MPSV-SSZ, MPO; Source: MLSA-ESA, MIT



---

CIZINCI S PLATNÝM ŽIVNOSTENSKÝM OPRÁVNĚNÍM PODLE  
VĚKOVÝCH SKUPIN - 31.12.2006  
FOREIGNERS HOLDING VALID TRADE LICENCE BY AGE  
GROUPS - 31.12.2006

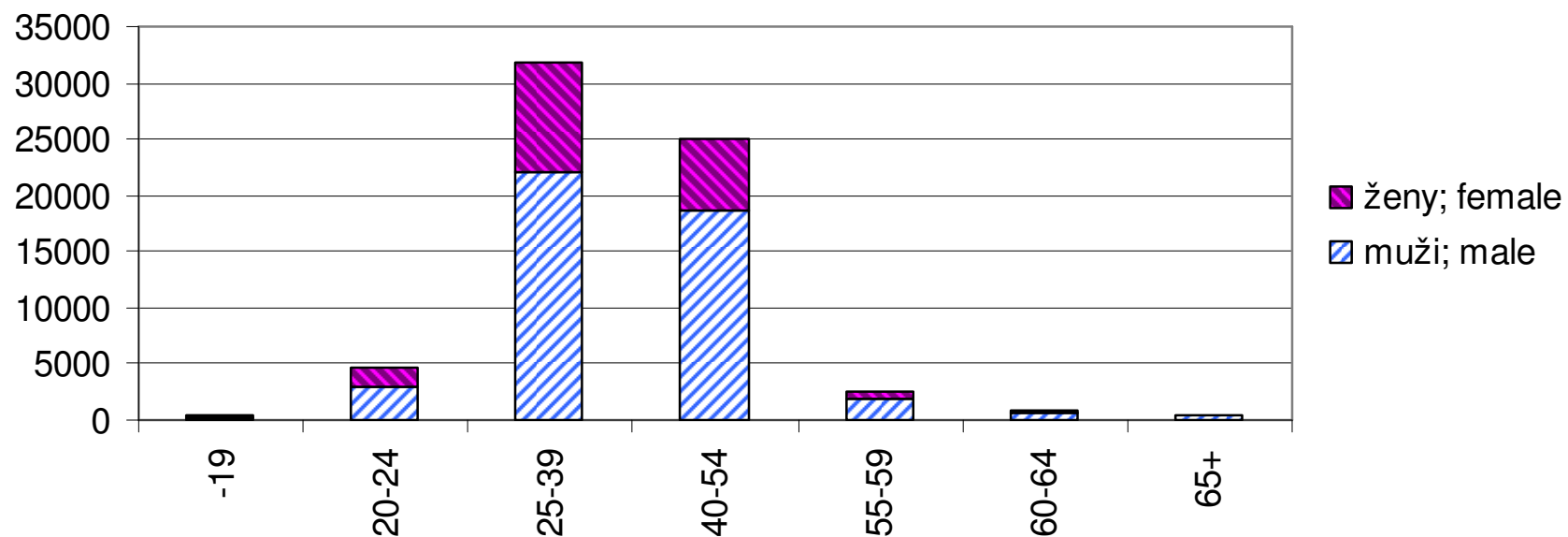
**Cizinci s živnostenským oprávněním podle věku**



CIZINCI S PLATNÝM ŽIVNOSTENSKÝM OPRÁVNĚNÍM PODLE  
VĚKOVÝCH SKUPIN A POHLAVÍ  
FOREIGNERS HOLDING VALID TRADE LICENCE BY AGE GROUPS  
AND GENDER

31.12.2006

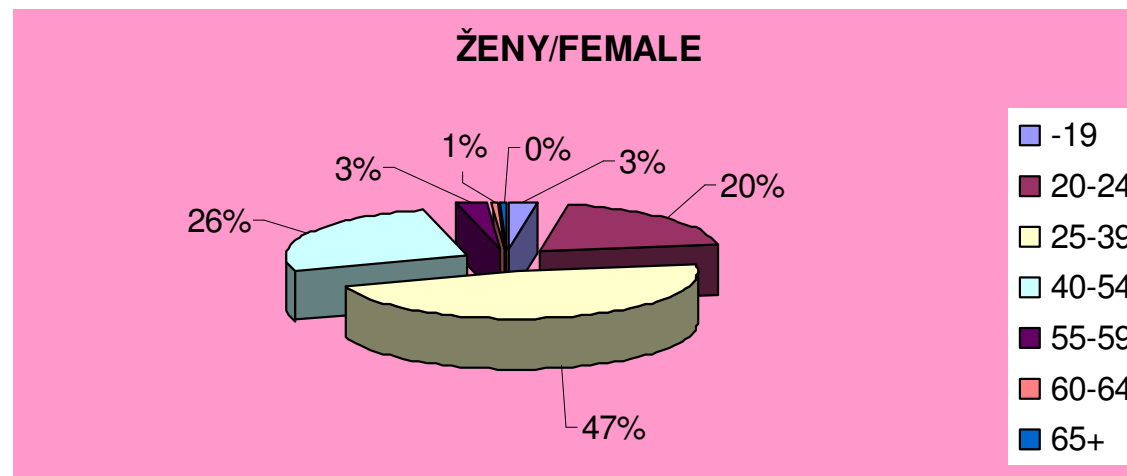
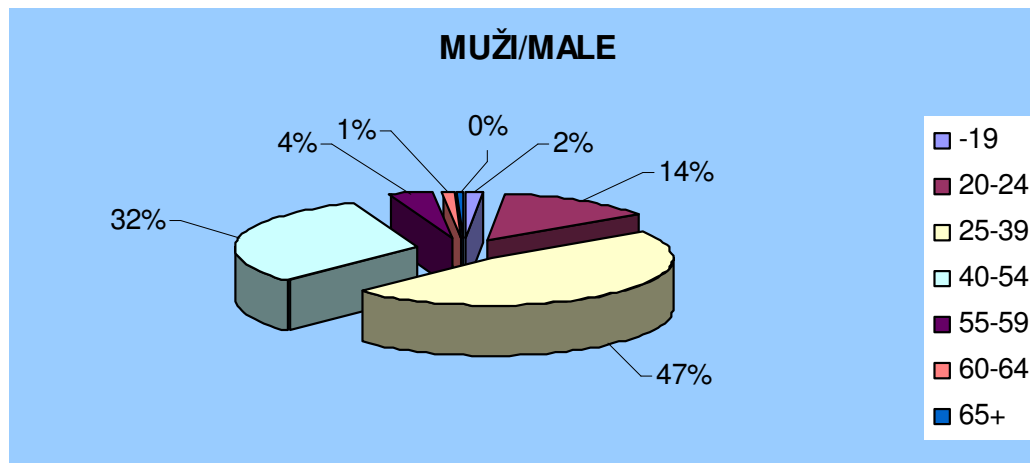
Pramen: MPSV-SSZ, MPO; Source: MLSA-ESA, MIT



# ZAMĚSTNANOST MUŽŮ A ŽEN PODLE VĚKU EMPLOYMENT OF MALES AND FEMALES BY AGE

31.12.2006

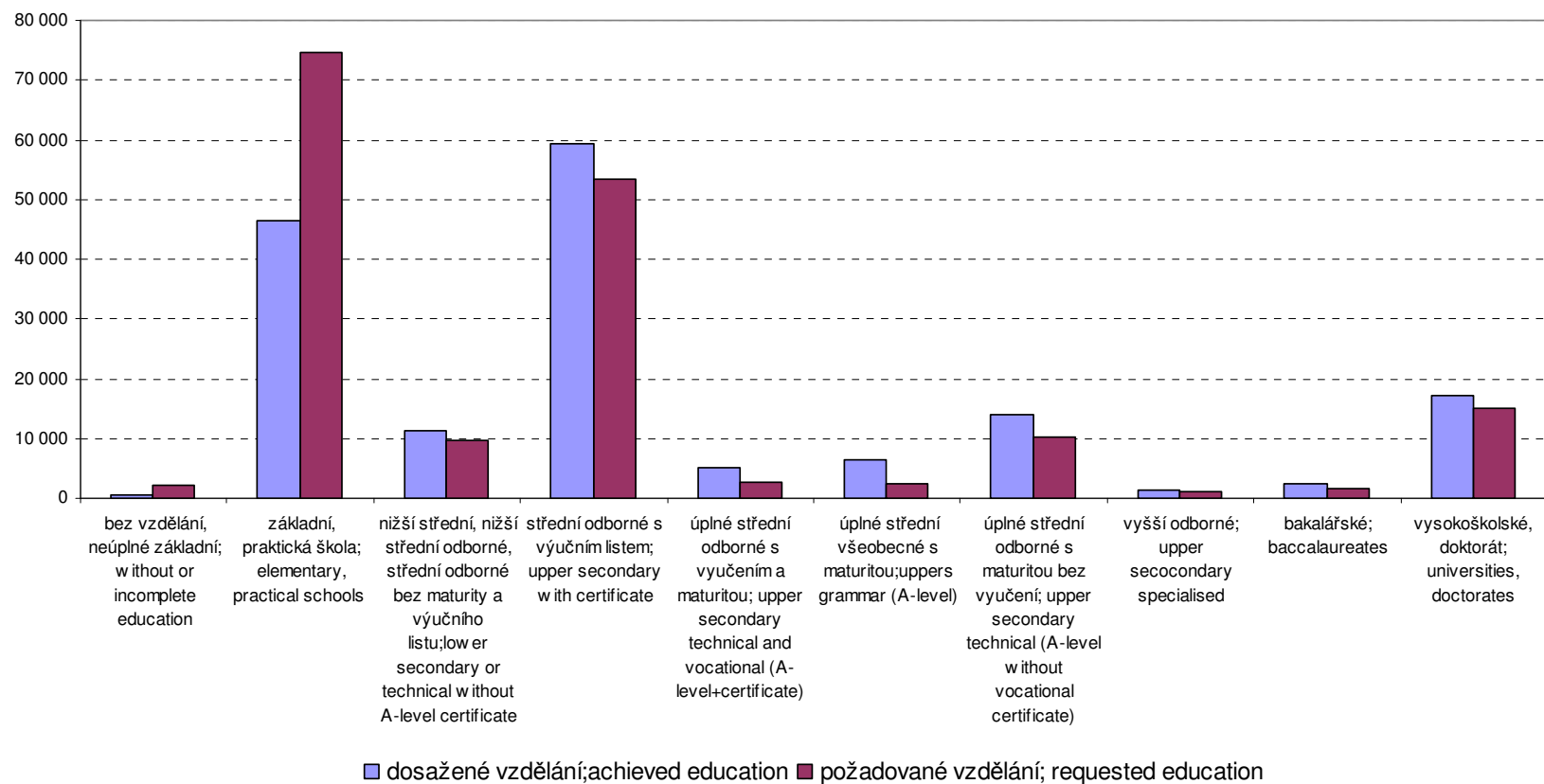
Pramen: MPSV-SSZ, MPO; Source: MLSA-ESA, MIT



# DOSAŽENÉ A POŽADOVANÉ VZDĚLÁNÍ CIZICŮ EVIDOVANÝCH NA ÚŘADECH PRÁCE

## ACHIEVED AND REQUESTED EDUCATION OF FOREIGNERS REGISTERED AT LABOUR OFFICES

Pramen: MPSV-SSZ; Source: MLSA-ESA

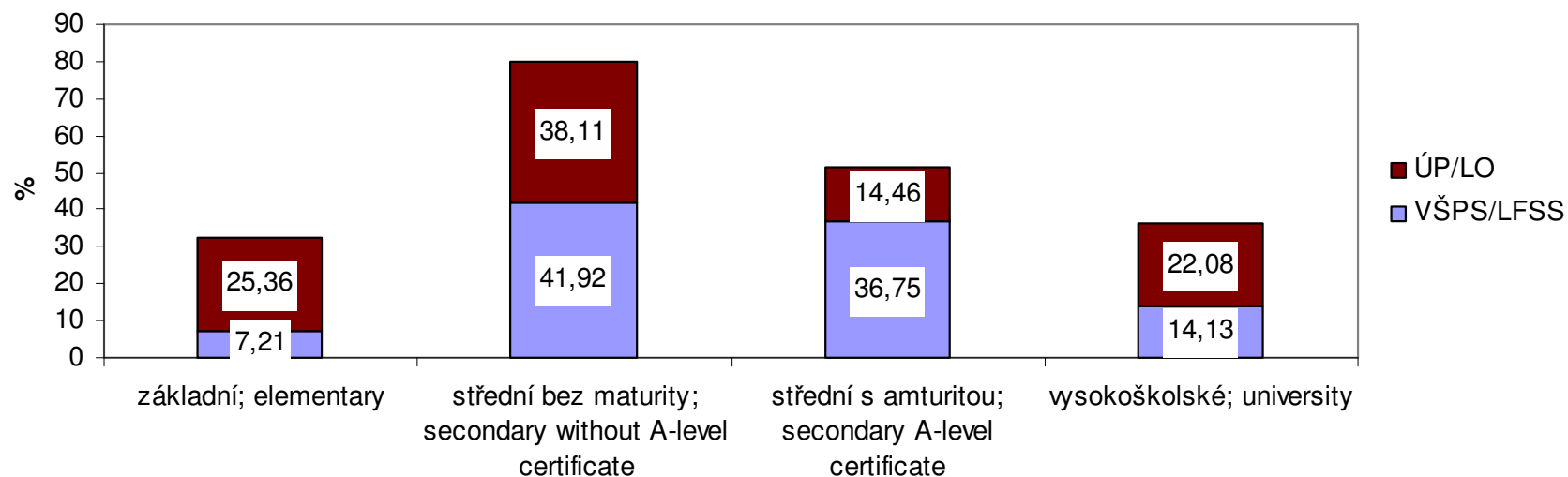




## DOSAŽENÉ VZDĚLÁNÍ ZAMĚSTNANÝCH V NH A CIZINCŮ EVIDOVANÝCH NA ÚŘADECH PRÁCE V R. 2006

## ACHIEVED EDUCATION OF EMPLOYED IN NE AND FOREIGNERS REGISTERED AT LABOUR OFFICES IN 2006

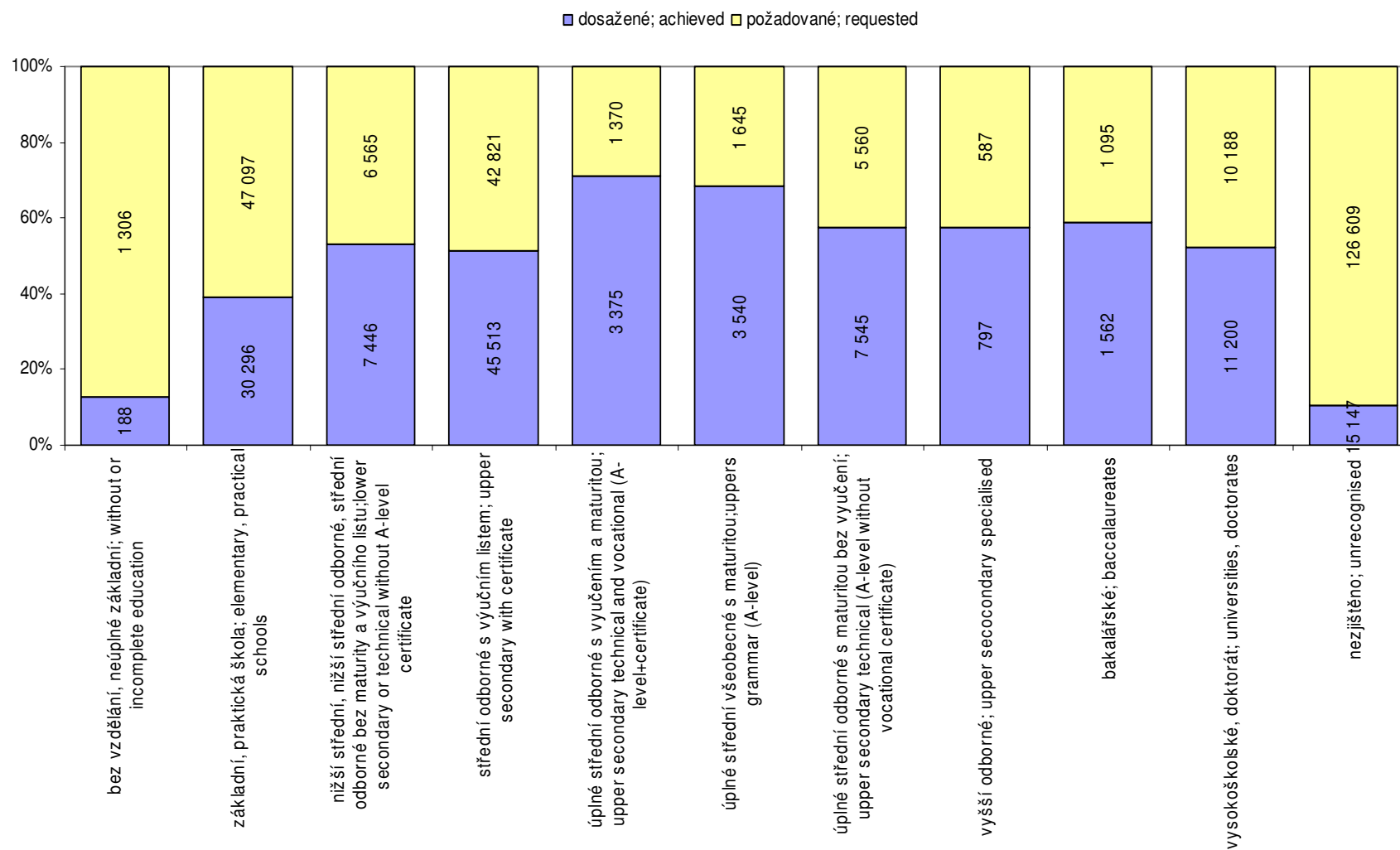
pramen: ČSÚ/VŠPS, MPSV-SSZ; Source CSO/LFSS, MLSA-ESA



# DOKONČENÉ A POŽADOVANÉ VZDĚLÁNÍ CIZINCŮ-MUŽŮ ACHIEVED AND REQUESTED EDUCATION OF MALE FOREIGNERS

31.12.2006

Pramen: MPSV-SSZ; Source: MLSA-ESA



# DOKONČENÉ A POŽADOVANÉ VZDĚLÁNÍ CIZINEK REGISTROVANÝCH ÚŘADY PRÁCE; ACHIEVED AND REQUESTED EDUCATION OF FEMALE FOREIGNERS REGISTERED AT LABOUR OFFICES; 31.12.2006

Pramen: MPSV-SSZ; Source: MLSA-ESA

